

# Welcome to Wintec

Centre for Education and Foundation Pathways



Congratulations and Welcome! Please refer to the information below about your semester two classes.

Because we use email and texting as a communication tool, please make sure we have your current email address and mobile phone number. You can phone Wintec on 0800 2 WINTEC (0800 2 946 832) to change your details.

If you have any questions about your enrolment, please don't hesitate to contact me on (07) 834 8800 ext. 8276 or by email on [Selina.Penjueli@wintec.ac.nz](mailto:Selina.Penjueli@wintec.ac.nz).

## YOUR FIRST DAY – SEMESTER TWO - 2017

### ES0101 - Graduate Diploma in Teaching English to Speakers of Other Languages

Code:	Module Name:	Start Date:	Time:	Location:
ESTE703/1702	Evaluating and Developing Assessment Tasks	Tuesday 25 July	10.00am - 1.00pm	D Block, Lower Ground Floor, Room Dlg.26, City Campus
ESTE704/1702	Curriculum and Materials Design	Wednesday 26 July	4.15pm - 7.15pm	D Block, Lower Ground Floor, Room Dlg.26, City Campus

## BOOKLIST

### REQUIRED TEXTS:

#### ESTE703 - Evaluating and Developing Assessment Tasks

- Brown, H.D. & Abeywickrama, P. (2010). *Language assessment: Principles and classroom practices*. (2<sup>nd</sup> ed.) White Plains, NY: Pearson Education.

#### ESTE704 - Curriculum and Materials Design

- Nation, I.S.P. & Macalister, J. (2010). *Language curriculum design*. New York: Routledge.

## TEMPORARY STUDENT PARKING PERMIT - Display this clearly on your dashboard

This permit allows you to park at Wintec for your FIRST WEEK FREE to give you time to organise your permanent parking permit. If this permit is not displayed, you MUST have a permanent parking permit and a 'pay and display' ticket on your vehicle dashboard.

### PERMANENT PARKING PERMIT

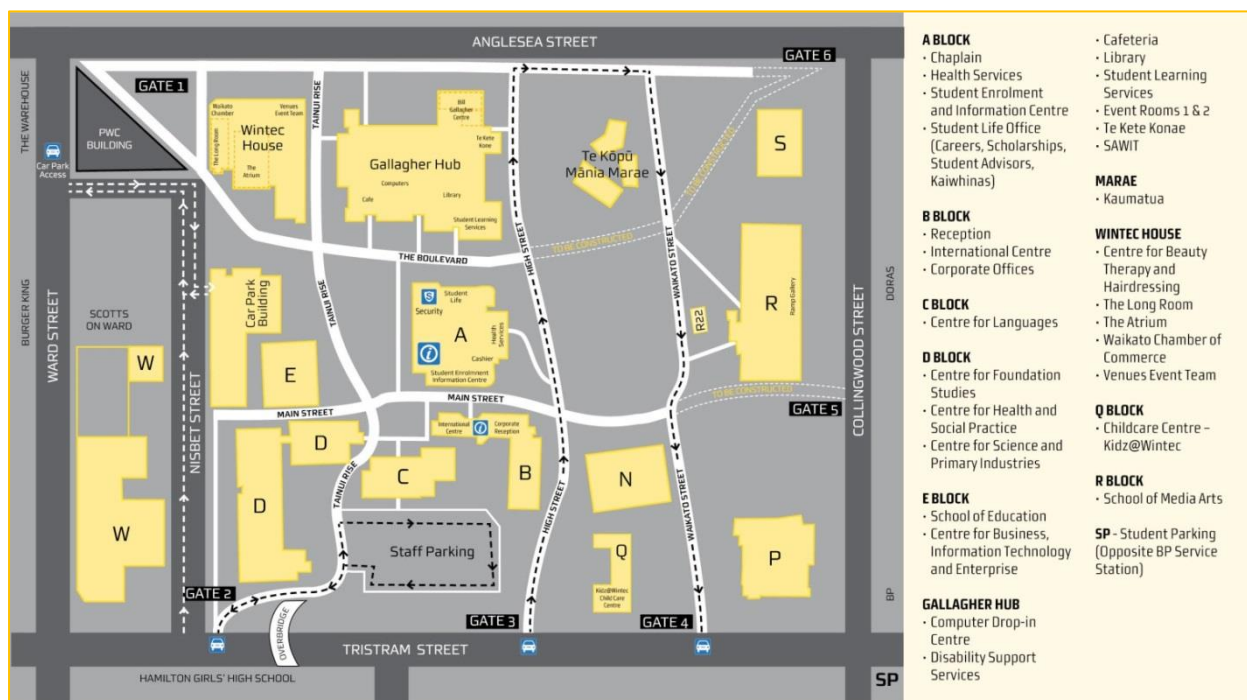
Your permanent parking permit must be displayed after your first week along with a 'pay and display' ticket on your vehicle dashboard to avoid parking infringements.

You can find out where to park and more about student parking, including how to get your permanent student parking permit, at <http://www.wintec.ac.nz/parking/pages/index.aspx>

For all the information you need in the lead up to your first day at Wintec check out [www.wintec.ac.nz/welcome](http://www.wintec.ac.nz/welcome)



## HOW TO FIND YOUR WAY AROUND



## WINTEC PŌWHIRI 2017 / NAU MAI, HAERE MAI

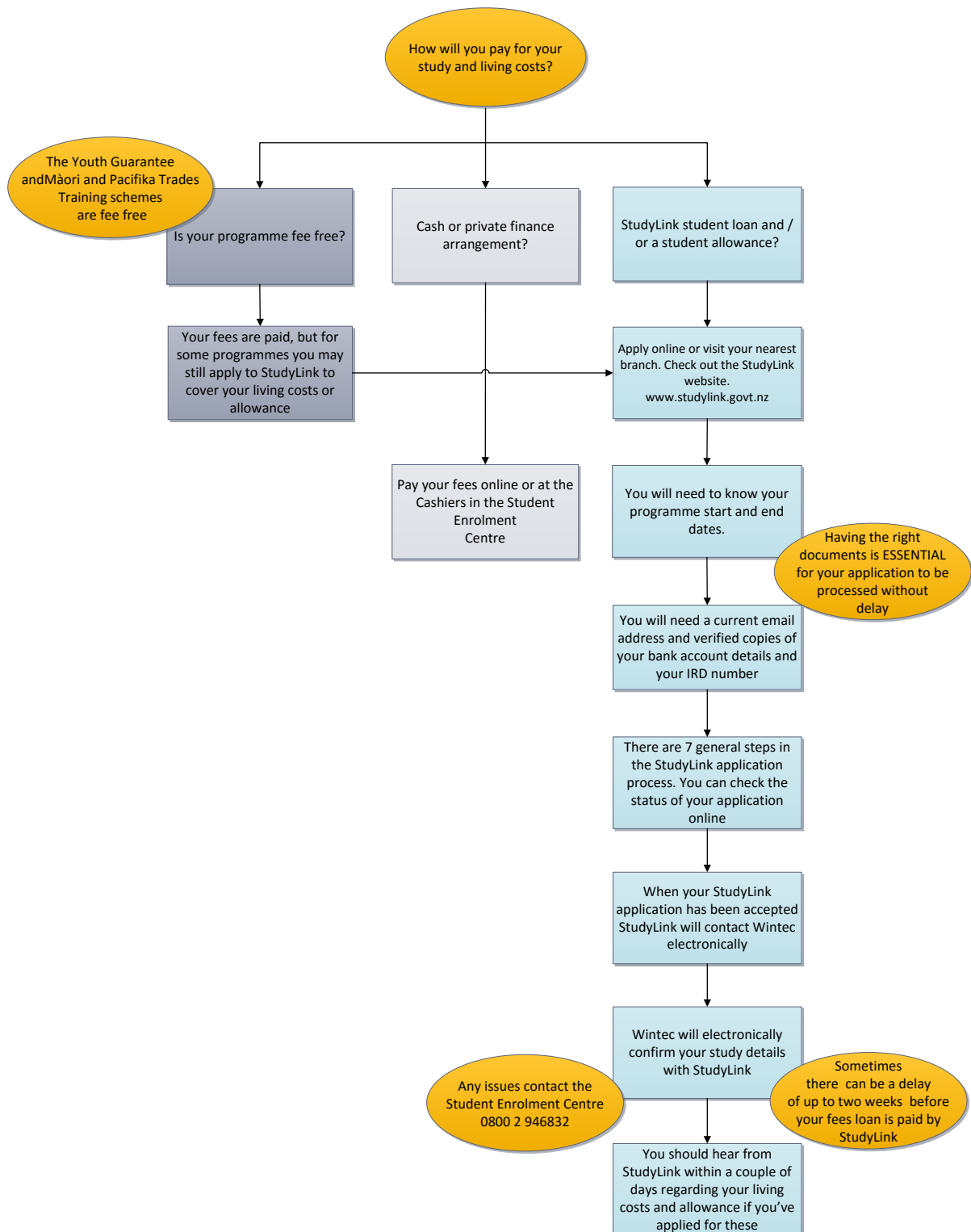
Wintec extends a warm invitation to **all new students** commencing 2017 to attend a Pōwhiri to welcome the semester ahead. After formalities, light refreshments will be served in the marae dining room, Te Kōpū Mānia o Kirikiriroa, Wintec City Campus.

When:	Time:	Where:	RSVP:
Monday 17 July	Assemble at 8.45am for a 9.00am start opposite the marae	Te Kōpū Mānia o Kirikiriroa Wintec City Campus	By 14 July to Korikori Hawkins by: Phone: 07 834 8920 Free Text 8283: Cpowhiri (and your name)

For all the information you need in the lead up to your first day at Wintec check out [www.wintec.ac.nz/welcome](http://www.wintec.ac.nz/welcome)

## PAYING FOR YOUR STUDY

Great you've received your offer – what next?



For all the information you need in the lead up to your first day at Wintec check out [www.wintec.ac.nz/welcome](http://www.wintec.ac.nz/welcome)