



The Hub Herald

No.10. 20/6/16

It was great to have a reasonably settled week of weather last week, cutting into the existing building is much easier if you don't have to worry about the rain getting in. We managed to remove the end of the western wing and weather proof it ready for the rest of the structural steel to be fitted this week. The structural steel was all delivered on site for the eastern side last week so good visual progress is expected again this week. You may also notice we have closed off the western wing where the old reception was, we will start removing and altering services in there from this week.

This week the structural steel continues and we will start installing the eastern side structure once the western side is completed. There is more demolition to carry out on the eastern side of the building for this to be completed so we will be working on that today and tomorrow. The scaffolders will be on site to install some fall protection and scaffold platforms around the exterior of the western side to make it safe for us to work on the roof and the framing to the exterior walls and roof will be well underway.

Next week, we will continue installing the roof and wall framing, carry out some demolition inside the western wing and look to start installing some of the roof.

Off-site this week we hope to confirm the last of the details in the design so we can start organising the materials and resources to complete the project in all areas. In the next fine break we will look at starting the landscape works so the site fence will expand in the next couple of weeks so this can be done.

As always please feel free to comment on any actions you feel may compromise safety or security on site in any way via the Wintec Project Manager, Miko Brouwer (021 052 6983 or miko.brouwer@wintec.ac.nz).

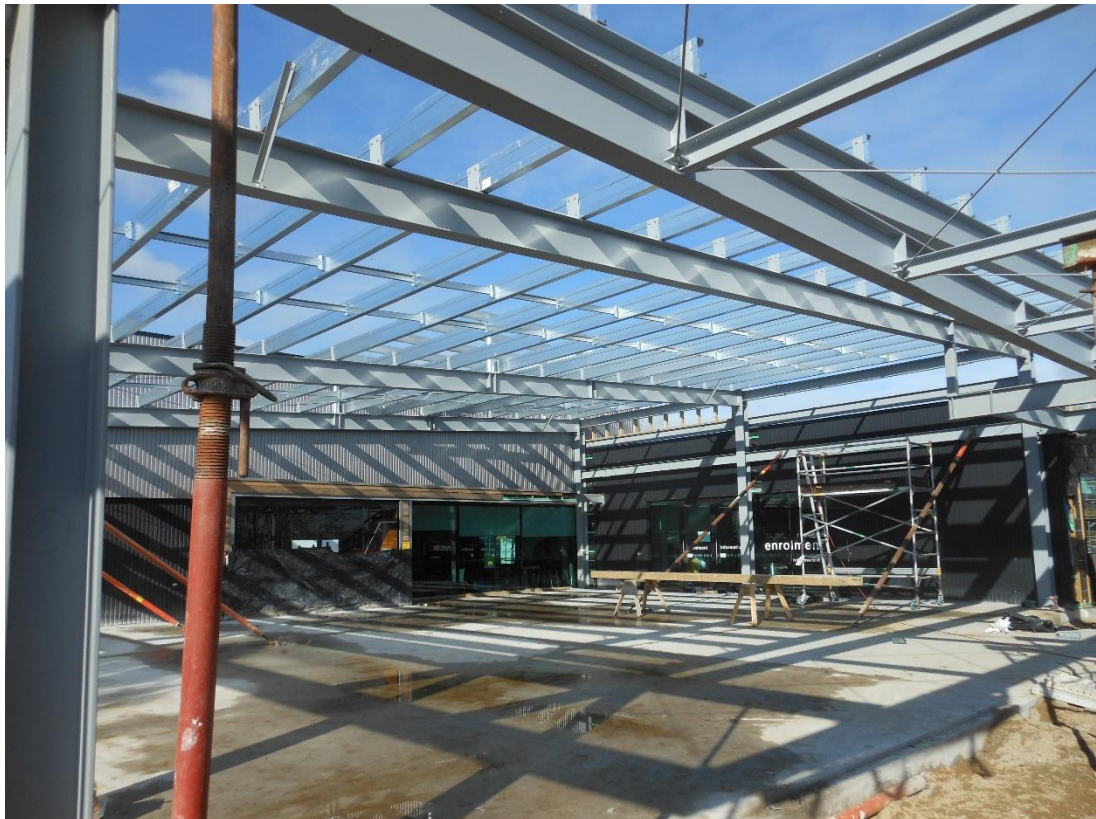


Lance Strawbridge (Hawkins Construction Project Manager) 0274953722

"Safety is no accident"



The western end weather-proofed up after demolition



The structural steel erected on the western side and wall framing started



The eastern side demolition underway and structural steel ready to be installed



The end of the western side from the roof