

International Prospectus 2017



**Disclaimer**

The information contained in this prospectus is correct at the time of printing (December 2016). Wintec (Waikato Institute of Technology) reserves the right to cancel or postpone any of the programmes and shall not be liable for any claim other than the proportion of programme fees which the cancelled portion bears. Some programmes may be dependent upon formal approval from NZQA, Tertiary Education Commission funding allocation, and the number of enrolments. As part of the New Zealand Qualifications Authority (NZQA) targeted review of all Level 1–6 New Zealand qualifications, there may still be changes to some programmes starting in 2017 and in 2018.



Fees, programmes and dates are subject to change. Please check course information at **wintec.ac.nz** before applying to enrol.

Contents

Welcome to Wintec

- 02 Why Choose Wintec
 - 03 Hamilton, New Zealand
 - 04 Our Facilities
 - 05 Our Campuses
 - 06 Student Life and Accommodation
 - 07 Dedicated International Centre
 - 08 Student Support and Resources
-

Your Planning



- 10 Qualification Levels
 - 11 Entry Requirements
-



Your Study Options

- 12 English
 - 16 Applied Science & Primary Industries
 - 20 Beauty, Hair and Hospitality
 - 24 Business
 - 28 Education
 - 30 Engineering
 - 34 Health and Social Practice
 - 38 Information Technology (IT)
 - 44 Media Arts
 - 50 Sport and Exercise Science
 - 54 Tourism
-

Next Steps

- 56 Important Information
- 57 Glossary
- 58 How to Enrol

 international@wintec.ac.nz
 [instagram.com/wintecnz](https://www.instagram.com/wintecnz)

 [facebook.com/wintec](https://www.facebook.com/wintec)
 snapchat wintecnz

Why Choose Wintec?

We provide you with a positive hands-on learning experience, access to some of the best purpose-built facilities in New Zealand, and industry leading academic staff.

Before you're ready to join the workforce, we teach you the practical skills you need to succeed. When you are learning relevant techniques and skills, you will immediately impress your future employers.

Your confidence will grow in our unique practical learning environments, which include a student radio station, an art gallery, a practicing nursing ward, science teaching laboratories, fully equipped sport science facilities, specialist kitchens and a training restaurant, hair and beauty salons, music and design studios, a veterinary surgery, an animal house and fully equipped trades workshops, which are regarded as some of the best in the country.

Your tutors are highly respected in their fields of expertise, and keep actively connected with industry via their involvement in research and development. You will benefit from the wealth of knowledge, experience and industry connections, they have to offer you. But, more importantly, your tutors are passionate about helping you achieve your goals. You will be on a first name basis with most, because they care and want to give you the support you need to succeed at Wintec and beyond. After all, your accomplishments are theirs too.

NZQA assesses the standard of education for tertiary education organisations through a regular system of external evaluation and review (EER). Through periodic EER, tertiary education organisations are held accountable to their students, employers, funders, quality assurance bodies and other interested parties.



Hamilton, New Zealand

In Hamilton, you'll enjoy city life without all the inconveniences of big city life, especially traffic. You're spoilt for choice with a unique mix of things to do and enjoy. You can enjoy watching a live sports match, shopping, visiting the Waikato Museum or an art gallery, paintball, ten-pin bowling, go-carting, watching a play or musical at the theatre, a lively nightlife and the picturesque river and lake walkways. Just an easy drive away are beaches, mountains, rivers, thermal pools, countryside, sport centres and adventure activities.



Location

Built on the banks of New Zealand's largest river, Hamilton is close to beaches, mountains, thermal pools, sport centres, adventure activities, and is a short driving distance from Auckland, Rotorua and Raglan beach.



Local Events

From international sporting events such as rugby and cricket, to music festivals, National Agricultural Fieldays, Balloons over Waikato, The Hamilton Gardens Arts Festival, expos, theatre, dance, visual arts, markets and more, there's always something happening in Hamilton.



Climate

Hamilton has a temperate climate, which means summers are warm and dry and winters cool and wet. Summer temperatures can rise to as high as 29°C.



Cost of Living

Living costs and accommodation in Hamilton are considerably cheaper in comparison to other cities, such as Auckland, Christchurch or Wellington.

Our Facilities



(Rotokauri Campus)

Engineering and Trades

Our Engineering and Trades Facility opened in July 2014 and is home to more than 1000 engineering and trades students and 100 Wintec staff.

The building's unique design and function make it New Zealand's most modern engineering and trades education facility, with an open plan layout, flexible teaching spaces and the latest technologies.

The design is informed by a collaborative, project-based, real-world learning philosophy to create vibrant, flexible, and contemporary spaces for students and staff.



(Rotokauri Campus)

Windows Restaurant

Our prized student-operated training restaurant, Windows, has a licensed bar and offers indoor and outdoor dining to accommodate 80 people.

Students gain the skills they need in this state-of-the-art training facility, which includes two large commercial kitchens and a production kitchen.



Ramp Gallery

Ramp Gallery is our contemporary exhibition space within the School of Media Arts.

Ramp connects our students to a professional gallery experience while exposing them to a range of contemporary art.

Each exhibition also runs an accompanying education and public programme.



Urban Hair and Spa

Our Hairdressing and Beauty Therapy students can enjoy learning in our two fully equipped salons, Urban Spa and Hair.

Students can improve their practical and salon-operation skills, while working with real clients and gaining real salon experience.



Practising Nursing Ward

Our real world-simulated learning area is set up as an actual nursing ward and includes computerised, patient-models that assume real life health issues.

This allows students to practise on real-world scenarios and gain hands-on skills and experience in a safe and supportive environment.



(Hamilton City Campus)



(Rotokauri Campus)

Our Campuses

You will be studying at one of our three main campuses in Hamilton City.

Hamilton City Campus

The City Campus is located in the heart of Hamilton's CBD, where you're within easy reach of shops, the Waikato River, Hamilton's Lake Rotoroa and public transport.

The Hamilton Gardens Campus

The Gardens Campus gives you the unique opportunity to study horticulture, floristry, arboriculture and landscape design and construction at the international award-winning Hamilton Gardens. You'll enjoy gaining valuable hands-on experience and working closely with nature.

Rotokauri Campus

Rotokauri Campus is located north of the city, where you'll be learning in some of the best, purpose-built training facilities in New Zealand. We have fully equipped trades workshops, animal handling facilities, a veterinary surgery, a specialist training restaurant and kitchens, and sport science labs as well as a Student Hub.

Wherever you're studying you'll have free computer and internet access, as well as 24 hour, 7 day a week access to the Gallagher Hub at the City Campus.



(The Hamilton Gardens Campus)

Student Life



Campus Cafés & Snack Spots

You'll find everything you need to find a good meal to eat right here on campus.

We have microwaves for you to heat up last night's left over dinner, hot water for noodles, and vending machines with snacks.

Both the City and Rotokauri Campus have on-site cafés where you can enjoy a hot coffee and take your pick from a delicious range of food.



Campus Activities & Events

Events and activities with fellow students are all part of your campus experience. Once you arrive in New Zealand, follow our facebook. com/wintecstudent page or @wintecnz on snapchat so you don't miss out on any student events.



Accommodation

Homestay - You'll enjoy living in the home of a New Zealand family with a high level of pastoral care, and 3 meals offered seven days a week. Our homestay hosts are carefully selected for their kind and caring nature.

Wintec Apartments - You'll enjoy the convenience of living right on the Hamilton City Campus in our fully furnished self-catered student apartments. There's no need for a car when you are this close to town, study, and transport.

Student Village - You'll get the independence of living away from home in these fully furnished units on Collingwood Street next to the city campus, with the convenience of a higher level of pastoral care, cleaning, and meals offered seven days a week. We place all of our under 18 students in the Wintec approved Student village. If you are under the age of 18, you will not be allowed to rent or live on your own. Read more about the Code of Practice on page 56.

Under 18s - We place all of our under 18 students in Wintec approved accommodation. If you are under the age of 18, you will not be allowed to rent or live on your own. Read more about the Code of Practice on page 56.





Dedicated International Centre

Our friendly International Centre team are ready to provide you with the support and advice you need to have a positive experience at Wintec.

We can help you with your accommodation needs, getting you settled into your studies, emergency assistance and pastoral care. Our 24/7 pastoral care service is provided to every International Student - free of charge! We also organise events and activities throughout the year to make you feel at home and celebrate your cultural diversity. These events include Orientation week, CultureFest, Wintec annual ski trip, and more!

You'll find the International Centre team in B Block at the City Campus.



Student Support and Resources

We want to offer you the best support to help you succeed on your journey, because the pathway to success is not always an easy one. We offer the following services to make things easier for you.

Student Learning Services

We have a specialist team of friendly people ready to help you with your studies. They can offer you one-on-one, small group and workshop sessions on a range of topics including assignment planning, researching, reading and writing, mathematics and science, study skills, e.g. note taking and time management skills.

Just come to a drop-in session or make an appointment to help guide you with your studies. For more information contact sls@wintec.ac.nz or visit Academic Learning Resources on Moodle.

Moodle

Moodle is your go-to online learning tool. It gives you access to all of your programme's material, which may include lecture notes, research material, and practice tests. With a computer and an internet connection, you can access Moodle anywhere, anytime.

Library

You have access to our two main libraries which are located at the City and the Rotokauri Campus. Both provide a huge range of resource material ranging from books to newspapers, specialist journals, DVD's, audio tapes and much more.

You also have access to online databases, which allow you to search for material in journals, magazines, ebooks and other online resources. You can even have material sent to you if you're studying by distance learning.

Disability Support Services

Our friendly team are here to enable students' academic capabilities. If you're enrolled or looking to enrol at Wintec and have been diagnosed with a physical, sensory, learning, psychological impairment or illness, you may be able to get support during your studies. We work with all areas of Wintec to provide quality support systems, build independence and opportunities for students. Email us at sls@wintec.ac.nz to find out how we can help you.



Computer Access

No matter where you're studying, you'll have access to computers at all of our campuses. The Gallagher Hub at the City Campus has over 130 computers for you to use 24 hours a day, 7 days a week. The City and Rotokauri Campuses also have wireless hotspots, so you can study where you want.

You'll also have access to the ITS helpdesk whose staff are there to help with the computers, printers, scanners and the MyLearning portal.

MyLearning

This is your online learning forum where you can keep track of your timetable, check your emails and study online. You can do it all in one place, day or night, from anywhere, online in MyLearning.

Employment Advice and Support

If you need help preparing your application for part-time work or your first graduate role, make an appointment to see the team at Student Life. They can help you with your CV, interview techniques, employment advice and more.

Childcare

Wondering how to juggle study and family? Our childcare centre, Kidz@Wintec, could be the answer. Located on the City Campus, our centre provides care and education for children up to five years. Early booking is essential. Email the Kidz@Wintec manager, Doreen Frame doreen.frame@wintec.ac.nz

Health Services and Counselling

Need medical help? You have access to our Health Centres at both our City and Rotokauri Campuses. Our registered nurses, doctors, counsellors, and chaplain are here to help with any issues you have whilst you study at Wintec.

Security

We all deserve to live, work and study in a safe environment. That's why we have security staff patrolling Wintec buildings, 24 hours a day, seven days a week, and emergency phones located around the campuses.

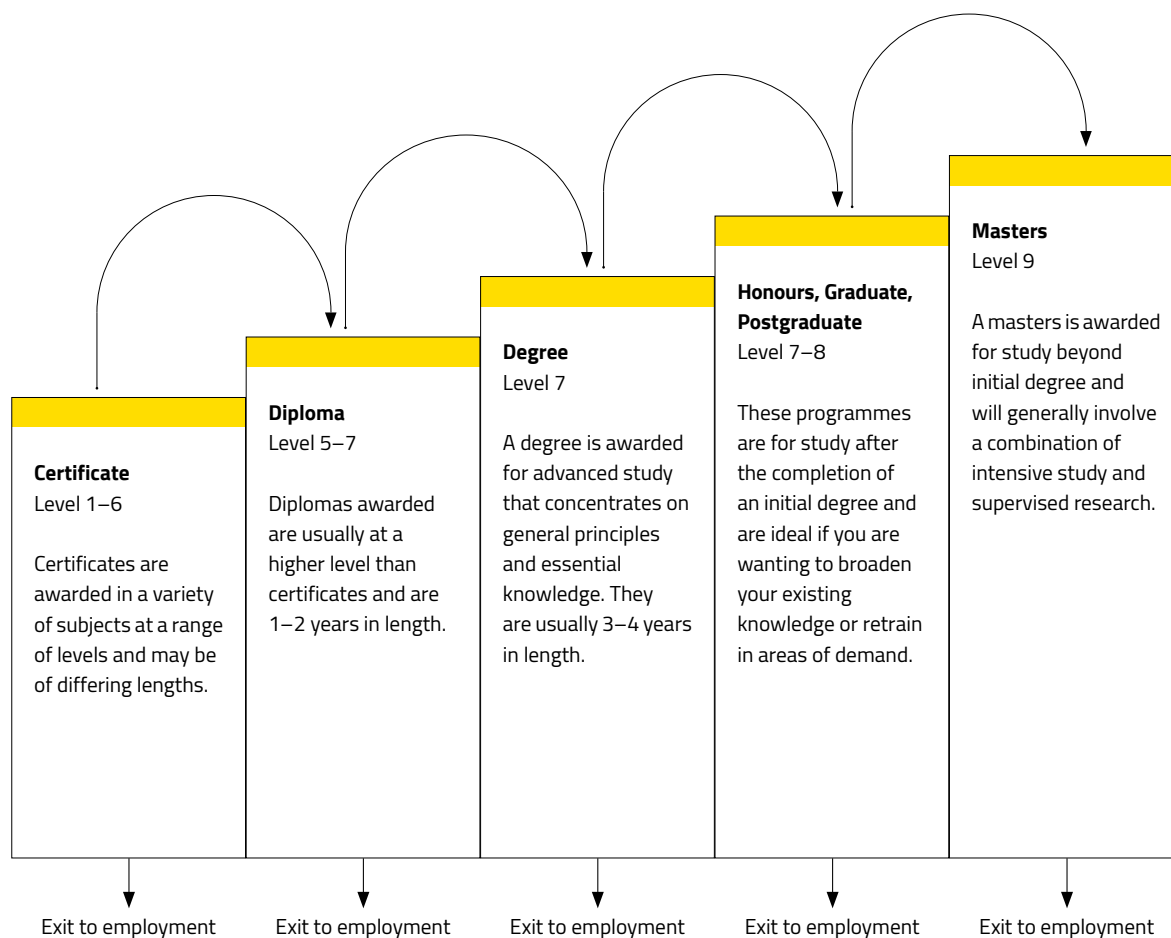
Prayer room

You'll have access to prayer rooms, with washing facilities, located in the Student Hubs at the City and Rotokauri Campuses.



Qualification Levels

The New Zealand Qualifications Framework is divided into 10 levels, and covers a range of qualifications from certificates to doctoral degrees. The levels are based on how complex the learning is.



Entry Requirements

This is a general indication; some programmes have different criteria or specific entry requirements so check the entry criteria for each programme in this prospectus or contact our Student Enrolment and Information Centre international@wintec.ac.nz.

Internationally recognised English Proficiency Outcomes for International Students

IELTS*	TOEFL IBT	TOEFL PBT	Pearson
5.5 (Level 4)	46	530	42
5.5 (Level 5)	46	550	42
6.0	60	550	50
6.5	79	590	58

Note: for the Bachelor of Nursing and Bachelor of Midwifery a B grade OET score (IELTS 7.0-7.5 equivalent) is acceptable in terms of meeting English proficiency.

International Academic Admission Requirements

Wintec has set minimum requirements for academic entry to programmes for International Students. The requirements are listed by country. For country specific information, visit: www.wintec.ac.nz/international/how-to-apply/entry-requirements



English



EL1500

New Zealand Certificate in English Language (Foundation) (Level 1)

Duration: 18 weeks

You will attend an interview to establish your English language skill level, and show your likelihood of success. You will be required to take a placement test.

With this certificate you will be introduced to the four English language skills – reading, writing, listening and speaking. You will begin to use and understand simple English for everyday situations. You will also be introduced to online learning.

Further Study

This certificate offers the necessary language proficiency for entry into further English language programmes, usually NZCEL Level 1.

EL1501

New Zealand Certificate in English Language (Level 1)

Duration: 18 weeks

You will attend an interview to establish your English language skill level, and show your likelihood of success. You may be required to take a placement test.

This programme will introduce you to high elementary communication skills and help you develop your English skills in reading, writing, listening and speaking. You will develop skills to help you use and understand simple English for everyday, familiar situations. You will also develop face-to-face and online study skills.

Further Study

This certificate offers the necessary language proficiency for entry into further English language programmes, usually NZCEL Level 2.

EL1502

New Zealand Certificate in English Language (Level 2)

Duration: 18 weeks

You will attend an interview to establish your English language skill level, and show your likelihood of success. You may be required to take a placement test.

This programme will develop your language and communication skills at a low intermediate level. You will develop your oral and written English skills to help you use and understand English for familiar situations at Wintec and in New Zealand. The programme will also develop your face-to-face and online study skills.

Further Study

This certificate offers the necessary language proficiency for entry into further English language programmes, usually NZCEL Level 3.



New Zealand Certificate in English Language (Level 3)

Duration: 18 Weeks

IELTS: 4.5 or equivalent. You will attend an interview to establish your English language skill level, and show your likelihood of success. You may be required to take a placement test

This programme will help you gain the skills you need for tertiary study, training or work in New Zealand. You will develop your oral and written English language skills so you can understand and use more complex language in an academic or workplace context, and for most situations in wider life. You will also develop face-to-face, independent and online learning study skills.

Further Study and Career Opportunities

This programme has two pathways. The Workplace pathway can lead to employment or further study. The Academic pathway leads to higher study in advanced English language programmes. It also provides a pathway into some Wintec certificate programmes and into some diploma programmes as well.

New Zealand Certificate in English Language (Level 4)

Duration: 18 Weeks

IELTS: 5.5 with a minimum of 5.0 in writing, or equivalent. You will attend an interview to establish your English language skill level, and show your likelihood of success. You may be required to take a placement test.

This programme will prepare you for tertiary study, training or work in New Zealand. You will enhance your oral and written English language skills to understand and use more complex language in an academic or workplace context, and for most situations in wider life.

Further Study and Career Opportunities

This programme has two pathways, one Workplace and one Academic. The Workplace pathway may lead to employment or further study. The Academic pathway leads to higher study, into advanced EAL (English as an Additional Language) programmes. It also provides a pathway into most Wintec undergraduate programmes.

Students can also study concurrent programme: Level 4 English Business Pathway (one module from Business); or Level 5 English Health Pathway (one module from Science/Biology). There will be additional fees if enrolled in both Level 4 English and Business or Level 5 English and Science. This concurrent programme is unique in New Zealand to Wintec. Additional fees will apply.

"This course is challenging and my English has improved a lot. I am interested in midwifery, and I would have to pass a higher IELTS exam, but this course has given me good preparation and my confidence has increased"

Cecilia Tae Kyung Kwak - New Zealand Certificate in English Language student

New Zealand Certificate in English Language (Level 5)

Duration: 18 Weeks

IELTS: 6.0 with a minimum of 5.5 in writing, or equivalent. You will attend an interview to establish your English language skill level, and show your likelihood of success. You may be required to take a placement test.

This programme will prepare you for higher-level study, training or employment in New Zealand. You will consolidate your oral and written English language skills to use and understand complex English for a wide range of situations, and will expand your face-to-face, independent and online learning study skills.

Further Study and Career Opportunities

This programme has two pathways. The Academic pathway leads into higher academic study such as Nursing or postgraduate programmes. The second is the professional pathway, which supports entry into professional positions. Students can also study concurrent programme: Level 5 English Health Pathway (one module from Science/Biology). Additional fees apply

"Wintec's supportive and friendly learning atmosphere helped boost my confidence and enhance my communication skills and vocabulary. After completing an English programme, I am now pursuing the Bachelor of Technology at Wintec."

Duoja Li - English Language, and Bachelor of Technology student



LANG425 / LANG426

Summer School English

Duration: 6 weeks, 20 hours per week
IELTS: You will attend an interview to establish your English language skill level, and show your likelihood of success. You may be required to take a placement test
Dates: 6 weeks over December/January

You will attend an interview and take a test to establish your English language skill level, and show your likelihood of success. International applicants must have Immigration New Zealand documents to show eligibility to study in New Zealand.

You will improve your fluency and build your confidence. You will develop language learning skills and strategies to improve your reading, writing, listening and speaking skills.

English Language Training

For those international students unable to begin their courses in February or July semesters, please enquire about enrolment in an English Language Training Scheme between semesters.

EL0L234B

IELTS Preparation

Duration: 9 weeks, 4 hours per week
Dates: March / August
Time: 5:00-7:00pm, Mondays and Thursdays

This course will improve your language skills in preparation for sitting the IELTS test and provide an English language pathway into further study.

FCE Preparation (First Certificate English)

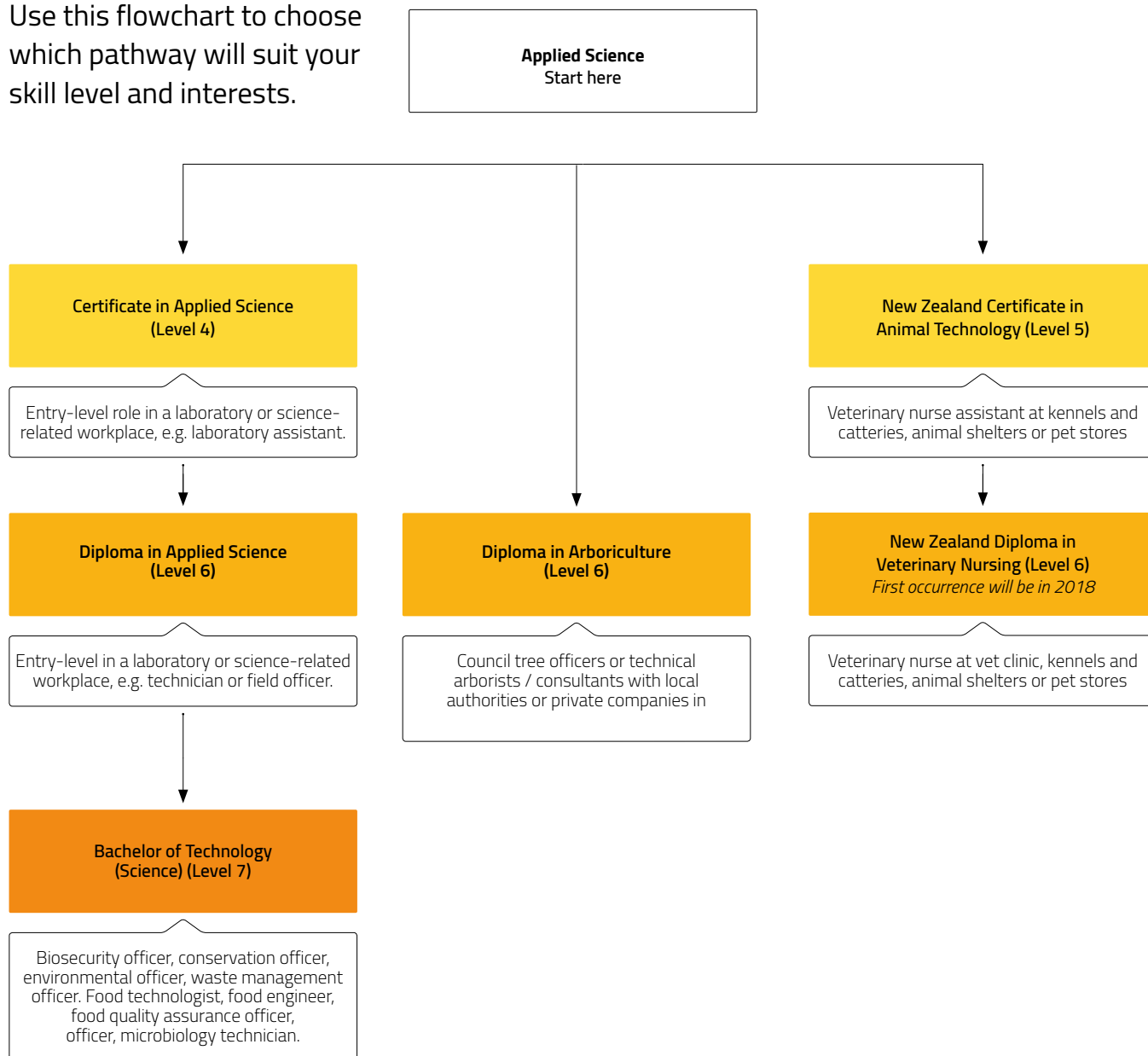
Courses held throughout the year.
Please enquire for dates.

Applied Science & Primary Industries



Pathways

Use this flowchart to choose which pathway will suit your skill level and interests.



Diploma in Applied Science (Level 6)

Duration: Starts February/July for 2 years
IELTS: 6.0, with no band lower than 5.5; or equivalent

In this programme you'll learn in-depth theoretical and technical knowledge in a specialised field of science(s) such as food technology, environmental technology or biotechnology. You can choose to focus on one pathway in science, or a combination of pathways.

Food technology is about the science of food. People who choose this pathway can work in entry level positions as food technologists who develop new food products, analyse the components of food, or; food safety officers who audit the food manufacturing industry.

Environmental technology is about the science of conservation, biosecurity and environmental management. People who choose this pathway can work in entry level positions as biosecurity officers who help manage pest animal and plant control, and help conserve local environments.

Biotechnology is about the 'doing' of science, this includes quality assurance of laboratory practices, the analysis of samples and reporting on sample results. People who choose this pathway can work in entry level positions as researchers or laboratory technicians.

You will study:

Year One: Applied Science 5 (Level 5) SX1709
 Year Two: Applied Science 6 (Level 6) SX1707

Bachelor of Technology (Science)(Level 7)

Duration: Starts February/July for 3 years
IELTS: 6.0, with no band lower than 5.5; or equivalent

This programme is an innovative, practical and future-focused degree. It has been designed to develop you into a highly skilled work-ready technologist prepared for a career in one of the following three endorsements:

- Biotechnology
- Environmental technology
- Food technology

These areas have been chosen for their alignment with local industry and the diverse range of opportunities for employment.

Food technology

Food technology focuses on areas such as food processing, food preservation, packaging, labelling, legislation, food fermentations, food engineering, cleaning and sanitation of food processing operations, food safety and quality control processes.

Biotechnology

Biotechnology is technology based around biology, especially as it relates to animals, plants, food science and medicine. Topics covered can include bio-engineering, molecular genetics, transgenics, bioremediations, industrial fermentation technologies, proteomics and genomics.

Environmental technology

Environmental technology embraces a wide-range of areas including biosecurity, sustainability, conservation, ecology, climate change, greenhouse effect, carbon footprint, the Resource Management Act, water and wastewater management, pollution and land management practices.

You'll graduate with a broad foundation in science and will have developed transferable and highly valued skills.

We want you to be able to adapt and change as technology changes and have transferable skills so you can move between industries.

The programme involves industry experience, allowing you to become familiar with your future work environment and with practical experience and knowledge, to be an immediate asset in the workplace.

As within industry, there is a focus on group and teamwork. Presentations, investigations, case studies and field trips will get you actively involved in finding the information you need to know.





SC1002

Diploma in Veterinary Nursing (Level 6)

Duration: Starts January for 1 year
IELTS: 6.0, with no band lower than 5.5; or equivalent

Students will develop advanced skills in the care, management, handling and nursing of a range of companion animals in a clinical environment, as well as the ability to manage patients and clients, and follow protocols in all aspects of clinical veterinary practice.

The programme includes a further 200 hours of work experience and will prepare graduates for employment.

You will study:

- Advanced Animal Behaviour
- Office Management
- Advanced Diagnostics
- Advanced Breeding
- Preventative Health and Disease Management
- Advanced Surgical Nursing
- Intensive Care and Hospitalisation
- Work Placement

Please note: This programme will be replaced by the new New Zealand Diploma in Veterinary Nursing (Level 6) in 2018.

AGO307

Diploma in Arboriculture (Level 6)

Duration: Start February for 1 year
IELTS: 6.0, with no individual band score of lower than 5.5; or equivalent

This diploma programme combines the best of theoretical classroom work with hands-on experience. It is the highest arboricultural qualification available in New Zealand and is your passport to gaining successful employment as an arborist both here and overseas.

Wintec's Diploma in Arboriculture combines the best theoretical classroom work with practical hands-on learning. Taught in the ideal surroundings of Hamilton Gardens, featuring 58 hectares of public gardens and an incredible variety of trees, you'll develop advanced arboriculture skills.

Wintec enjoys a special relationship with local councils and arboriculture companies. You will conduct research for a real client, and go on field trips to regional council sites and industry specialists, including the Scion Forestry Research Centre in Rotorua.

Experienced tutors will help you develop a unique range of skills and the ability to apply these skills in the professional world.

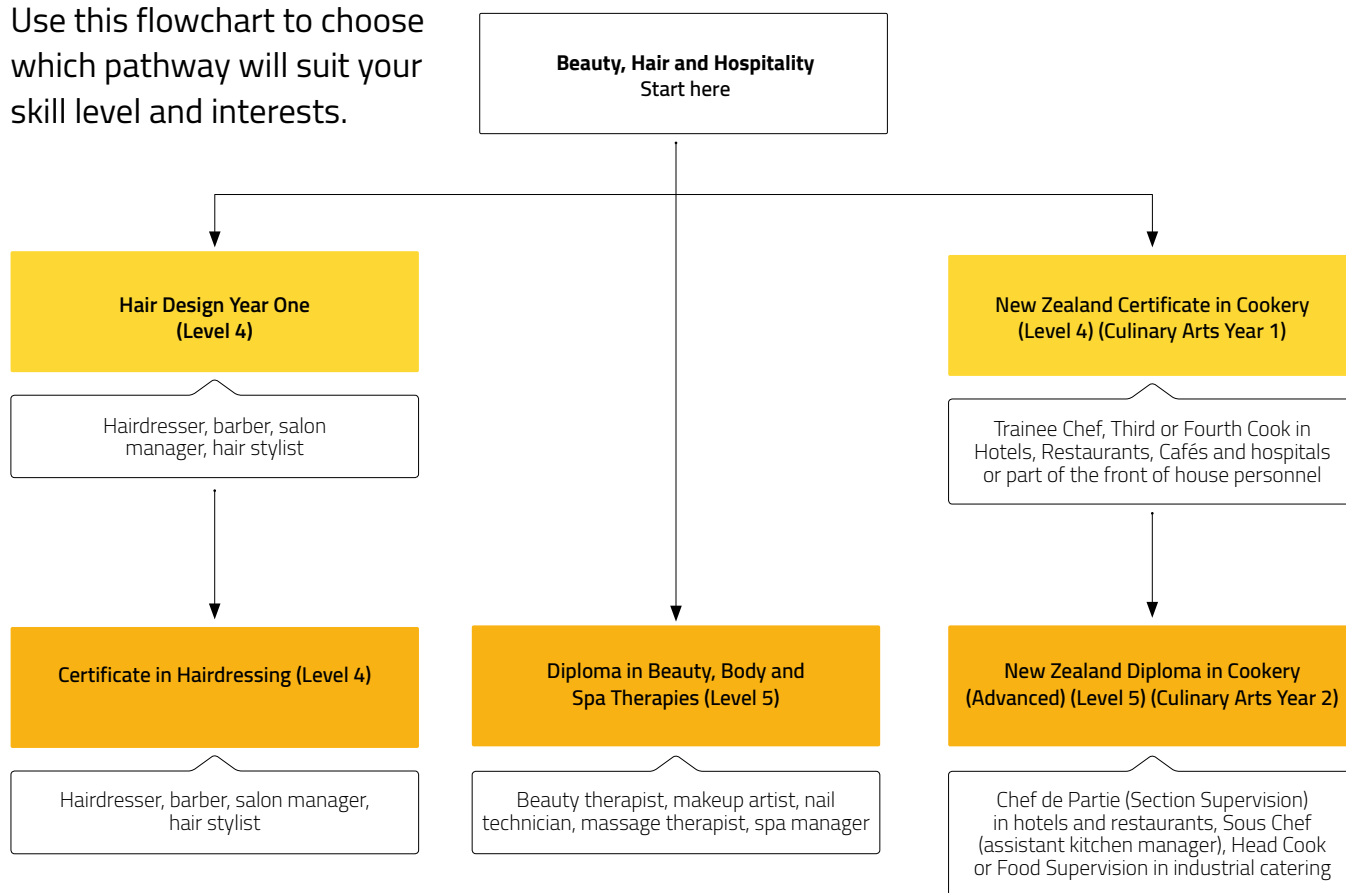
The Diploma in Arboriculture (Level 6) may lead to employment as council tree officers or technical arborists/consultants with local authorities or private companies in New Zealand and overseas.

Beauty, Hair and Hospitality



Pathways

Use this flowchart to choose which pathway will suit your skill level and interests.



Certificate in Hairdressing (Level 4)

Duration: Starts February for a year
IELTS: 5.5, with no band lower than 5.0; or equivalent

Entry Criteria

Certificate in Hairdressing Level 3, or equivalent

You'll further develop your professional hairdressing skills and open the door to a world of opportunities - from salon ownership to fashion catwalk work or working on cruise ships or overseas!

Cutting, colouring, straightening and foiling are some of the skills you will learn, to be able to give your clients a fabulous salon treatment.

You will study:

- Cut the Hair (Scissors) - Learn the practical skills involved with using scissors.
- Cut the Hair (Razor) - Learn the skills involved with using clippers and a razor.
- Advanced Hair Design - Learn to achieve the client's desired result.
- Colouring Techniques - The principles of permanent colour and bleaching of the hair.
- Straightening - Gain the knowledge to chemically straighten hair.
- Colour Correction - Learn to remove unwanted additives from the hair and neutralise unwanted colours.
- Consultation - Gain the skills required to consult with clients about hairdressing services and analysing hair and scalp.

On completion of the programme, to become a qualified Hairdresser, you'll need to work in a salon and complete three final unit standards. Unit standards can be credited towards the National Certificate in Hairdressing (Hairdressing Practice) (Level 4).

Please note: The last intake for this programme is February, 2017.

Diploma in Beauty, Body and Spa Therapies (Level 5)

Duration: Starts February for 2 years
IELTS: 6.0, with no band lower than 5.5; or equivalent

Gain the skills to pursue a career in the beauty, body, and spa industries. This course incorporates the Certificate in Beauty Clinic Practices. Also embedded within this programme are internationally recognised City & Guilds qualifications.

You'll learn skills that will take you all over the world and open up career opportunities from television and film, to international spa work, makeup and nail artistry.

You'll train in Wintec's state-of-the-art training facility, Urban Spa. Gain practical skills and work with real clients during your training to become a qualified beauty therapist and/or nail technician.

You will study:

Year 1 Modules

- Professionalism for the Beauty, Body and Spa Industry
- Facial Analysis and Treatment
- Essential Anatomy and Physiology for Beauty Therapy
- Advanced Facial and Tanning Techniques
- Practical Treatments for the Hands and Feet
- Professional Hair Removal Techniques
- Professional Eye Enhancement Treatments
- Practical Face and Figure Analysis

Year 2 Modules

- Advanced Facial and Body Treatments
- Anatomy and Physiology for the Spa Industries
- Body Massage Techniques
- Electrolysis and Electrical Therapy for the Spa Industry
- Beauty, Body and Spa Industry Development
- Special Techniques for Fashion Media
- Māori, Pasifika and Asian Cultural Treatments
- Professional Spa Practices





RS1601

New Zealand Certificate in Cookery (Level 4) (Culinary Arts Year 1)

Duration: Starts February or July for 1 year
IELTS: 5.5, with no band lower than 5.0; or equivalent

Culinary Arts Year 1 programme will provide you with the requisite skills and knowledge to work as chefs in intermediate positions producing complex dishes. You will develop cookery skills to prepare, cook and present food employing complex preparation and presentation techniques.

You will learn to monitor and maintain health and safety, food safety and security practices, and standard operating policies and procedures to work roles in a commercial kitchen.

You'll be doing a combination of kitchen workshops and theory studies. There is also a ten week service module where you'll be working in Wintec's fully licensed training restaurant - for more information about Windows visit www.wintec.ac.nz/windows.

You'll be learning in Wintec's state-of-the-art Centre of Hospitality with the best training facilities: two large commercial kitchens, a production kitchen, a training restaurant with indoor and outdoor dining, a licensed bar and a seating capacity for 80 people. Wintec's learning environment will help keep you focused and motivated all the way to graduation.

RS1701

New Zealand Diploma in Cookery (Level 5) (Culinary Arts Year 2)

Duration: Starts February or July for 1 year
IELTS: 5.5, with no band lower than 5.0; or equivalent

This is a second year programme that is designed to provide you with more advanced skills and knowledge in professional cookery. You'll be introduced to new techniques for preparing complex sauces, soups, desserts, pastry, breads and terrines as well as learning how to cook a range of traditional and contemporary menu items. Emphasis is placed on creating dishes that can be presented and served in modern hospitality establishments.

On this course, students may also wish to work towards an additional qualification from City and Guilds of London.

Wintec's superb Centre of Hospitality provides the best possible start to your career. It includes two large commercial kitchens, a production kitchen, and a fully operational training restaurant featuring indoor and outdoor dining, a licensed bar and seating capacity for 80.

Your tutors are experienced teachers from an industry background, many with first-hand knowledge of managing their own restaurants. They will be delivering both the practical and theory aspects of the programme.

You will gain advanced cookery skills attending four hour kitchen workshops and learning the relevant associated theory. One day a week, you will actually run the kitchen of our training restaurant, Windows. Work experience opportunities at events are available for students. You'll also have the opportunity to compete in the annual Waikato and National Culinary Fare.



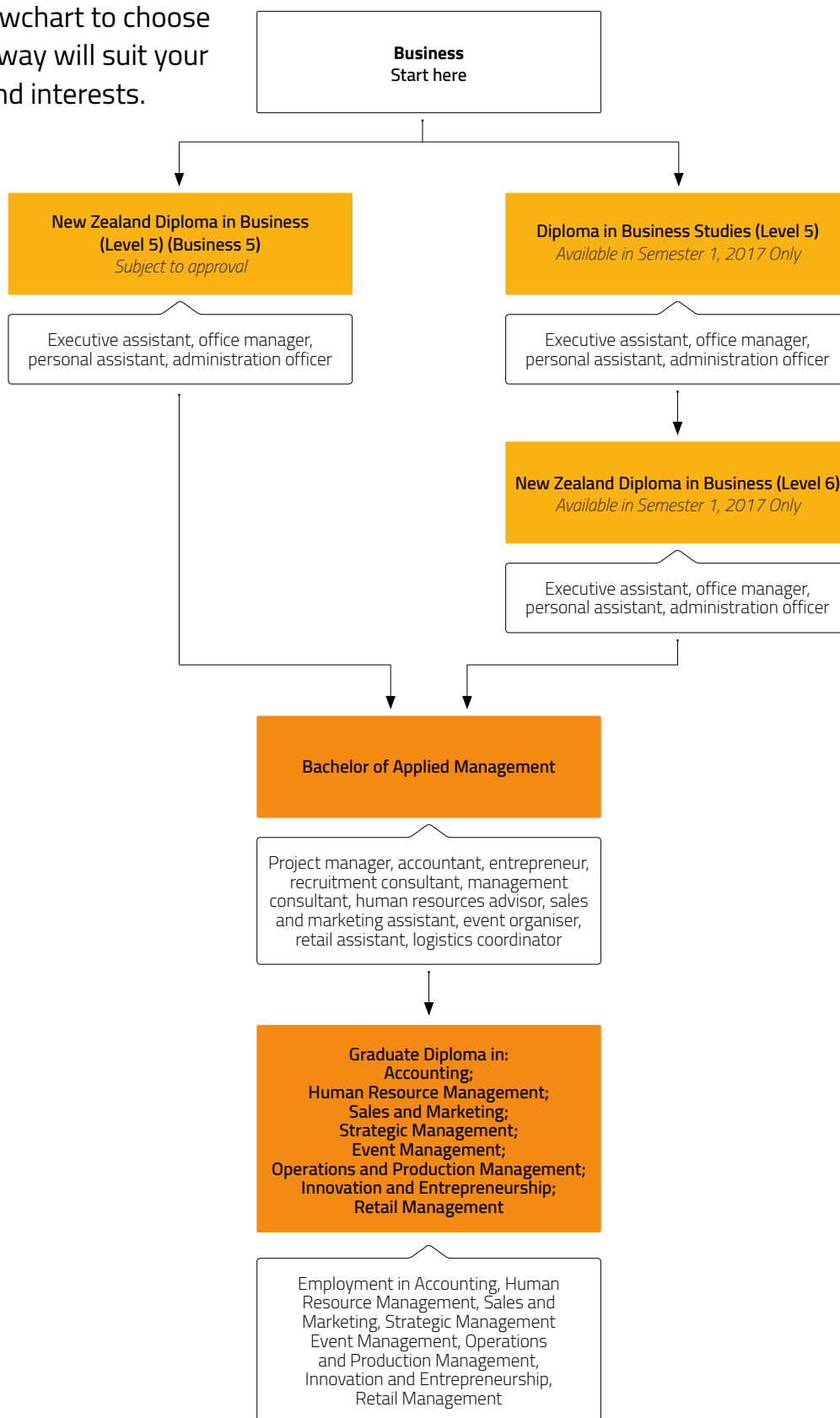
Embedded within both Culinary Arts programmes are internationally recognised City & Guilds qualifications.

Business



Pathways

Use this flowchart to choose which pathway will suit your skill level and interests.



New Zealand Diploma in Business (Level 5) (Business 5)*

Duration: Starts July for 1 year
IELTS: 5.5, with no band lower than 5.0; or equivalent

In the accounting strand you will study financial transactions, financial statements, budgeting and taxation, and decision-making and analysis. This strand may equip graduates to work towards the academic requirements for CAANZ's Accounting Technicians College.

In the administration and technology strand you will study business technologies, office management, business information, and administration systems and processes. This strand may equip graduates to work towards The Association of Administrative Professionals New Zealand's (AAPNZ) Certification.

In the leadership and management strand you will study business planning, project management, and leadership.

For those who wish to gain an accounting endorsement, this diploma is endorsed by CAANZ which are members of the Global Accounting Alliance. This makes a Wintec qualification internationally recognised and the foremost professional designation for accountants within the Asia-Pacific region.

**Subject to approval.*

Diploma in Business Studies (Level 5)

Duration: Starts February for 1 year
IELTS: 6.0, with no individual band score of lower than 5.5, or equivalent

Qualified and skilled people with a broad range of basic business knowledge are needed by all businesses. This programme has been developed in consultation with industry, and will equip you with the skills to work in areas such as marketing, management, market research, or within a small business. It will give you a broad range of introductory skills and knowledge for employment, or to progress to higher level study.

Study Topics

- The Economic Environment
- Accounting Principles
- Business Communication
- Organisation and Management
- Fundamentals of Marketing
- Human Resource Management

Please note: Due to qualification changes this programme is being replaced with the new New Zealand Diploma in Business (Business 5) from semester 2, 2017. However, students enrolled in this programme from semester 1 will not be affected by this change.

New Zealand Diploma in Business (Level 6)

Duration: Starts February for 2 years
IELTS: 6.0, with no individual band score of lower than 5.5, or equivalent

If you're aiming for a successful career in business, management, marketing or human resources this is the programme for you.

Study Topics

- Accounting principles
- Introduction to Commercial Law
- The Economic Environment
- Organisation and Management
- Marketing and Consumer Behaviour
- Leadership
- Business Communication
- Human Resource Management and Employment Relations

Please note: The last intake for this programme is February, 2017.



"This experience has given me the confidence to pursue a career in HR once I've completed my studies"

Cushla Richardson - Bachelor of Applied Management student

Bachelor of Applied Management (Level 7)

Duration: Starts February or July for 3 years
IELTS: 6.0, with no band lower than 5.5; or equivalent

If you have the drive to succeed then this programme could be right for you. The flexible structure allows you to choose from a range of majors and elective modules.

Majors

- Accounting (optional CAANZ/CPA pathway)
- Event Management
- Human Resource Management
- Operations and Production Management
- Sales and Marketing
- Strategic Management
- Innovation and Entrepreneurship
- Retail Management

In your first year you will study eight compulsory modules, giving you a strong understanding of business management.

In your second year you will study three modules specific to your major and a further three which could either contribute to a second major, or be elective modules based on your areas of interest. You will also take the Applied Management and Research Methodology core modules.

In your final year, you will complete the Cooperative Education Project (CEP). You will be placed in industry, gain valuable work experience and complete an agreed piece of research, increasing your chances of employment when you graduate.

NZCEL (Academic)(Level 4) and Bachelor of Applied Management (Level 7) Pathway Programme.
This unique programme is for students who want to begin a Bachelor of Applied Management, but do not meet Wintec's English requirements.
Students can enrol in NZCEL (Academic)(Level 4) and begin study with one module in the mainstream.

Graduate Diploma Programme (Level 7)

Duration: Starts February or July for 1 year
IELTS: 6.0, with no band lower than 5.5; or equivalent

Graduate Diploma in Accounting

Meet the accounting needs of any business and you'll be in high demand. With this qualification you'll learn the theory and practice of accountancy, critical thinking, decision-making and business analysis. The course also includes financial reports and business tax regulations. Before you graduate, you'll complete an accounting project for a real business as your final assignment. (BI1501) . To become a Chartered Accountant further study is required with either Chartered Accountants Australia New Zealand or CPA Australia. See www.charteredaccountantsanz.com or www.cpaaustralia.com.au for more information.

Graduate Diploma in Human Resource Management

You'll gain the essential skills you need to get the most from employees. You'll learn about staff management, recruitment, employee performance, up-skilling and development, and resolving conflict in the workplace. Most businesses need expert advice on industrial relations and employment law as well, so you'll be in demand. (BI1502)

Graduate Diploma in Sales and Marketing

Because every business has a product or service to sell, they'll need you to lead their sales and marketing team. You'll graduate with skills in consumer behavioural analysis, domestic and international market theory and applied marketing campaigns. (BI1503)

Graduate Diploma in Strategic Management

With this qualification, you'll gain specialist skills in business strategy that open industry doors and career opportunities. You'll understand the threats a business faces both internally and in the market place. Your leadership potential will be enhanced by your analytical skills and strategic thinking, and businesses will benefit from your expertise. (BI1504)

Graduate Diploma in Event Management

With this qualification, you'll gain specialist skills in event management that will open event industry doors and career opportunities on both the domestic and international markets. You'll understand the challenges the event industry faces in today's world. (BI1505)

Graduate Diploma in Operations and Production Management

Graduate and be in demand – the broad scope of this qualification equips you with the skills to get the best results out of people and processes. The skills in analysis and logistics you gain from an operation and production management pathway mean you can plan and implement production efficiencies that translate to what every business needs: a better bottom line. (BI1506)

Graduate Diploma in Innovation and Entrepreneurship

With this qualification you will learn how to innovate and create game-changing products and services, build a great team, incorporate customers' feedback in developing your service or product, learn from failures and turn them into opportunities, raise funds that you need for growth and know how to choose an appropriate and timely exit strategy. Innovation and entrepreneurship is crucial for the continuing success of any organisation – learn how you can make a difference in the world. (BI1608)

Graduate Diploma in Retail Management

The Graduate Diploma in Retail Management develops advanced understanding in the art of successful selling in today's competitive market and the unique focus on retail will allow students to develop a career in retail management. The development of skills in store designs, marketing campaigns, customer in store experiences and creating retail concepts will help you to advance through any organisation. (BI1609)

Education

"I taught English for over 10 years in China and chose to study at Wintec because I knew it would create better opportunities in the future"

Gary He - Teaching English to Speakers of Other Languages student



EU0901

Bachelor of Teaching (Early Childhood Education) (Level 7)

Duration: Starts in February or July for 3 years
IELTS: 7.0 across all bands; or equivalent

You'll enjoy sharing your knowledge with learners and watching their skills and confidence grow.

You'll learn how to build and maintain relationships with students and discover how they learn, how to teach and what to teach. You will also acquire the leadership, planning and organisational skills and values you need to be a professional teacher.

While studying you are required to be working or volunteering in a licensed early childhood education setting for a minimum of 12 hours per week. This will allow you to practice what you are learning in a real setting.

Classes are one day and one evening per week and a minimum of 12 hours per week in a licensed and chartered early childhood education service, as well as self-directed learning.

The first year of the programme focuses on learning and understanding the theoretical and educational concepts; the second year focuses on the implementation of these concepts, and the third year builds on both the theory and the practical aspects while at the same time encouraging you to become a more critically reflective practitioner.

ES9901

Graduate Diploma in Information Technology in Education (Level 7)

Duration: Starts February or July for 1 year
IELTS: 6.0, with no band lower than 5.5; or equivalent

This programme is designed to give you the capability to integrate information communication technology (ICT) in your classroom as part of an enhanced teaching and learning environment. You should have registered teaching qualifications and be working as an educator in some capacity, so you can apply what you are learning while you study.

You'll be learning through a range of practical courses, which incorporate theory and are taught using flexible delivery options. As a working educator you'll be able to immediately apply what you've learnt in your everyday classroom.

You will study:

- Cloud based Apps for Teaching and Learning
- ICT and the Learning Process
- Using ePortfolios in the Classroom
- Coding Tools for the Classroom
- Digital Storytelling in the Classroom
- ICT and Early Childhood Education
- Impact of ICT on Society
- Internet as an Educational Resource
- mLearning in the Classroom
- Developing Online Courses

To gain the full Graduate Diploma you must complete eight modules, three of which are compulsory.

ES0101

Graduate Diploma in Teaching English to Speakers of Other Languages (Level 7)

Duration: Starts February or July for 1 year
IELTS: 6.0, with no band lower than 5.5; or equivalent

Whether you are new to teaching, or you are already an experienced teacher, the Graduate Diploma in TESOL is designed to give you the knowledge and skills you will need to work effectively with English Language Learners (ELLs). The programme combines theory and practice, providing numerous opportunities to work with English language learners as you complete your studies.

You will observe English language teachers and their students in different classroom contexts, and relate this to second language acquisition theories, including factors which impact on English language learning.

You will add to your understanding of key aspects of English grammar and relate this to the typical difficulties English language learners encounter.

You will learn and practice English language teaching skills in an authentic classroom environment with real English language learners, and reflect on your experience in order to modify your practice.

You will experience and reflect on what it is like to begin learning another language, and consider implications of your experience for your future work as an English language teacher.

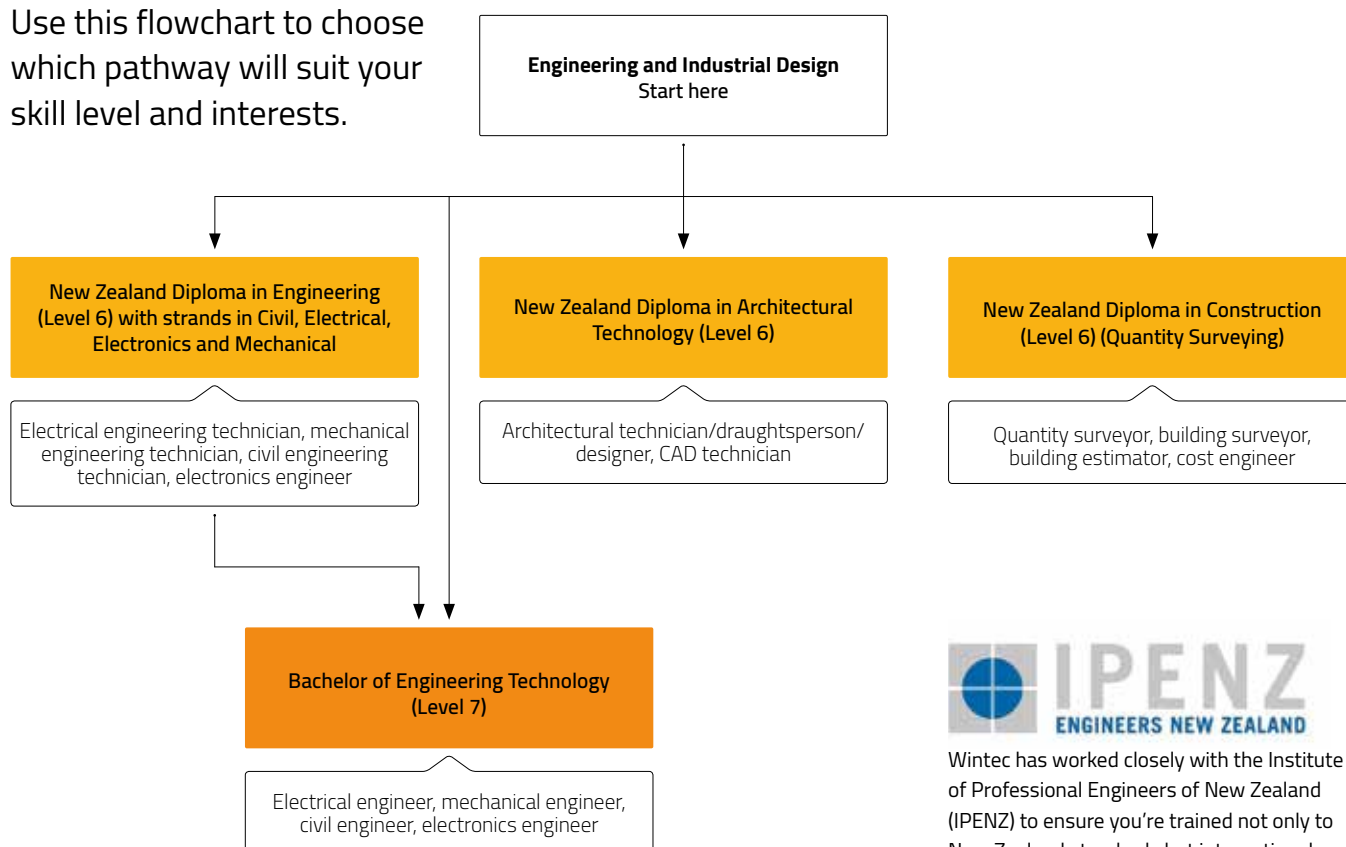
In the second stage of the programme, you will carry out two in-depth applied projects with a selected group of English language learners. In one project you will create and trial a mini-curriculum, and in the other you will adapt and deliver assessment tasks. You will also evaluate the effectiveness of these and make appropriate modifications.

Engineering and Industrial Design



Pathways

Use this flowchart to choose which pathway will suit your skill level and interests.



Wintec has worked closely with the Institute of Professional Engineers of New Zealand (IPENZ) to ensure you're trained not only to New Zealand standards but international standards as well.



New Zealand Diploma in Engineering (Level 6) with strands in Civil, Electrical, Electronics and Mechanical

Duration: February/July for 2 years
IELTS: 6.0, with no individual band score of lower than 5.5, or equivalent.

Enter the engineering industry with the ability to apply understanding and skills to the standard expected of a practicing engineering technician.

Civil Strand

As a civil engineer your days will be spent working on the design, construction and maintenance of civil engineering infrastructure, from roads and bridges, to harbors and sewerage disposal facilities.

Electrical Strand

In this strand you'll gain the core knowledge and practical skills needed for working in areas such as the power industry, industrial automation and consumer products.

Electronics Strand

We increasingly rely on modern appliances, communication devices, IT hardware and other electronic equipment in our personal lives, and in industry, and that means there is a need for more people to design, install, service and maintain those devices.

Mechanical Strand

You'll learn to design, build and maintain a range of machinery. As well as calculate costs and materials needed for a machine-building project or production run, and carry out feasibility studies using specialist software.

All of the New Zealand Diploma in Engineering programmes (Electrical, Mechanical, Civil) are accredited by IPENZ (Institute of Professional Engineers Inc.) and are recognised under the provisions of the Dublin Accord.

New Zealand Diploma in Architectural Technology (Level 6)

Duration: Starts February for 2 years
IELTS: 6.0, with no individual band score of lower than 5.5, or equivalent.

Architectural Technicians use their construction and drawing knowledge to make building designs become a reality. They produce drawings and documents that enable pricing, consenting and construction of domestic and commercial building projects. They also create architectural models and specifications and may be involved in administering construction contracts.

In this programme you will learn how to prepare fully detailed drawings and specifications for the construction of buildings. You'll learn to draw manually and use CAD packages. You'll be equipped to act as an architectural technician in small-to-medium-scale building projects. After an additional period of suitable experience, you'll be able to work on larger and more complex building projects.

You will study:

Year 1 Topics:

- Materials and structural principles
- Construction for small buildings
- Feasibility and environmental impact

Year 2 Topics:

- Construction for medium and large buildings
- Design in the built environment
- Virtual design and construction

New Zealand Diploma in Construction (Level 6) (Quantity Surveying)

Duration: Starts February for 2 years
IELTS: 6.0, with no band score less than 5.5; or equivalent.

Quantity surveyors manage the finances of construction projects. A working day could include liaising with clients, industry professionals and site workers; measuring quantities of materials; estimating; preparing claims, cash flows and construction programmes and much more.

This programme will equip you to work on small-to-medium-scale building projects. Once you have gained experience you will be able to extend your work to include larger and more complex building projects and carry out more complex tasks of cost planning and financial control.

Through a range of modules you will develop the skills for preliminary estimating and feasibility studies, quantification, pricing of construction and associated work, and financial administration of a project during construction.



SC1001

Bachelor of Engineering Technology (Level 7)

Duration: Starts February/July for 3 years
IELTS: 6.0 with a minimum of 6.0 in the written and speaking bands, and a minimum of 5.5 in the reading and listening bands, or equivalent.

Learn theory and practical skills using technology in our dedicated engineering labs, and equip yourself for a career in either civil, electrical, mechanical engineering.

Civil

Graduates of the Bachelor of Engineering Technology (Civil) apply mathematical, natural science and engineering fundamentals to civil engineering infrastructure such as roads, bridges, harbours and sewerage facilities. You will be asked to design and oversee the execution of solutions for a broad range of engineering problems. You'll get to research and investigate possibilities in order to propose the best options and most appropriate techniques and resources.

You will choose between two pathways in civil engineering: Water and Water Waste Engineering or Roading and Transportation Engineering.

Electrical

As an Electrical Engineering Technologist you could be busy specifying, designing or supervising the construction of systems and equipment that produce, distribute or use electricity, calculating costs and materials needed, bidding for contracts, overseeing electricity system tests and writing reports or even instruction manuals.

Electrical engineering includes the specialist areas of Mechatronics, which merges the two disciplines of Mechanical Engineering and electronics, and Power Engineering, for in-depth knowledge of the fundamental components of power automated systems.

Mechanical

As a mechanical engineering technologist, you'll design and give advice on the building and repair of machines and tools. You could spend your day determining the requirements of the production manager, carrying out feasibility studies, researching the use of energy sources, machinery and materials, using CAD software to model plans or preparing drawings of machines or machine parts.

You will study:

Year 1 Topics

You'll study six broad engineering papers and two papers specific to your major:

- Engineering Computing
- Engineering Communication
- Engineering Mechanics
- Engineering Mathematics
- Engineering Design and Drawing
- Engineering Management Principles

Year 2 Topics

Most of your papers will be specific to your specialisation.

Year 3 Topics

You'll put all the skills and processes you've learned into completing a practical, industry-based project. If you've gained employment then your project can be tailored to suit your workplace.

The six largest Institutes of Technology and Polytechnics of New Zealand, known as ITPNZ, have consulted with industry leaders to create this up-to-date, industry-relevant programme.

The Bachelor of Engineering Technology - Electrical and Civil, are accredited by IPENZ (Institute of Professional Engineers Inc.) and are recognised under the provisions of the Sydney Accord.

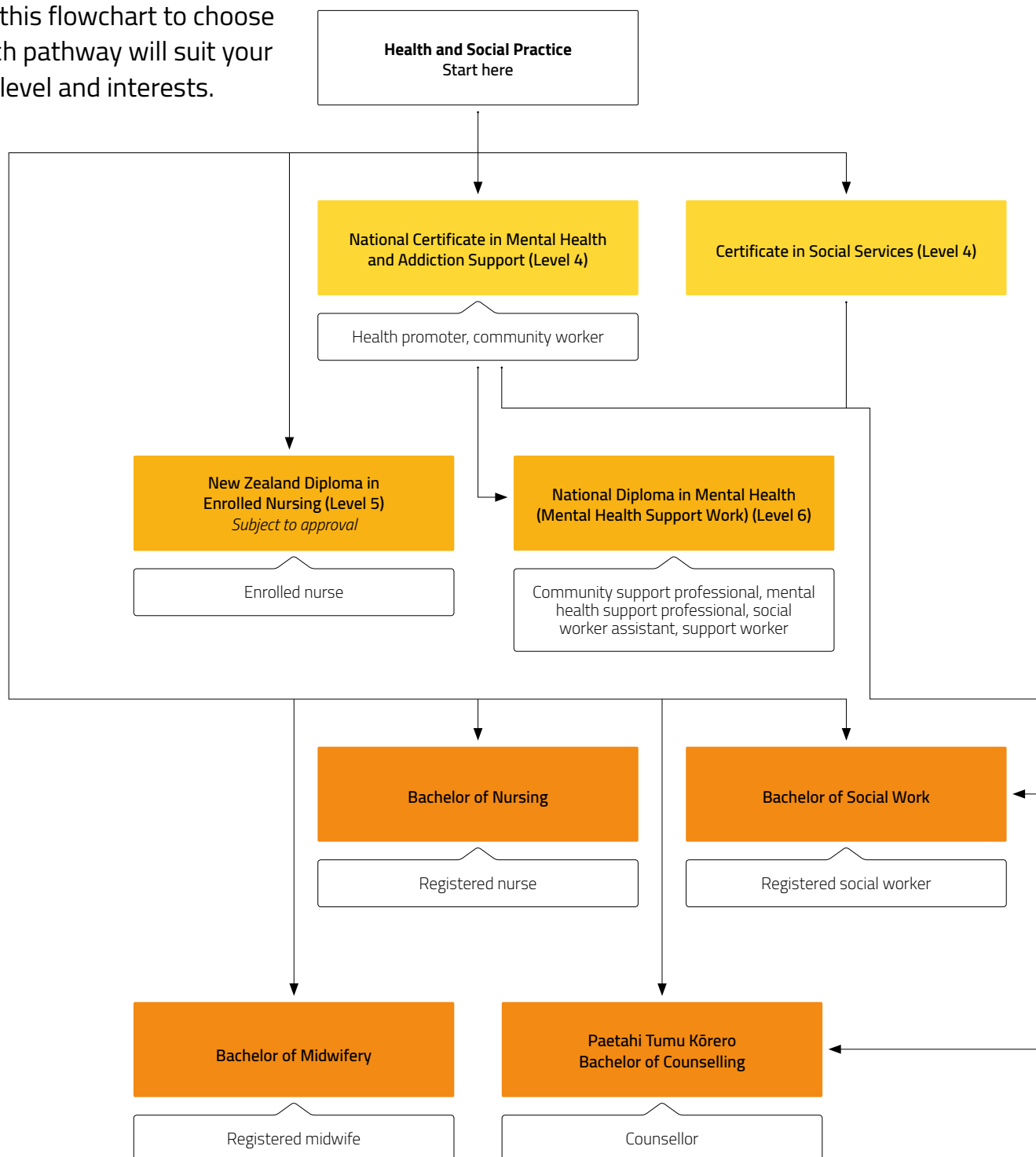
The Bachelor of Engineering Technology - Mechanical, has provisional accreditation by IPENZ (Institute of Professional Engineers Inc.) under the provisions of the Sydney Accord. Full accreditation will be awarded in 2-3 years when we have had sufficient students through the programme.

Health and Social Practice



Pathways

Use this flowchart to choose which pathway will suit your skill level and interests.



Postgraduate options available: Postgraduate Certificate in Health and Social Practice, Postgraduate Diploma in Health and Social Practice, Postgraduate Certificate in Professional Supervision, Postgraduate Certificate in Midwifery, Postgraduate Diploma in Nursing, Master of Nursing, Master of Professional Practice (subject to NZQA approval). For more information and entry requirements, search wintec.ac.nz/postgraduate



"I have found that the theory and practical aspects have played a huge part in helping me prepare for my career as a midwife."

Babette - Registered Midwife, Waikato DHB.



"I knew the Bachelor of Nursing here was highly respected. The supportive and friendly learning environment encourages me to think for myself."

Cherry - Bachelor of Nursing student.

*For the Bachelor of Nursing and Bachelor of Midwifery a B grade OET score (IELTS 7.0-7.5 equivalent) is acceptable in terms of meeting English proficiency.

HL0902

Bachelor of Nursing (Level 7)

Duration: Starts in February or July for 3 years
IELTS: 6.5 across all bands; or equivalent*

In Wintec's Centre for Health and Social Practice learning facilities you will develop the knowledge and skills you need to become an in demand Registered Nurse in a variety of health care settings. At the completion of the programme, you sit a Nursing Council of New Zealand registration exam and exit with an internationally recognised degree.

Nursing is a hands-on career and that's the way we teach it at Wintec. Our real world simulated learning area is set up as an actual ward where you practice on computerised patient simulation models that assume real life health issues. Your tutors are all experienced registered nurses with specific clinical skills, and you'll also find many of your tutors are involved in research and clinical practise. This means that what you learn is as current as you can get!

You have the opportunity to integrate theory and procedure through clinical practice within a hospital and health care facility. You will do a minimum of 1100 hours across four of the following areas - chronicity disability, elderly care, acute, family and infant - learning on real patients under the supervision of a registered nurse at our partnership organisations: Waikato DHB, private hospitals, elderly care centres or Māori Health Providers. You will also need to provide two references, a Curriculum Vitae, a completed Health Declaration form and a personal statement.

NZCEL (Academic)(Level 5) and Human Biology Pathway Programme.

This programme is for students who want to study a Nursing or Health degree, but do not meet Wintec's English requirements. Students can enrol in NZCEL (Academic)(Level 5) and begin study with one Human Biology module at the same time. This pathway programme is unique to Wintec and allows you to improve your English and get started in your tertiary studies.

HL0901

Bachelor of Midwifery (Level 7)

Duration: Starts in January for 3 years
IELTS: 7.0 with no less than 6.5 in writing and reading and 7.0 in speaking and listening, or equivalent*

As you learn, you're given the opportunity to apply your knowledge through hospital placements and with a midwife in independent practice. On completion of the programme, you sit the National Midwifery Examination to become a Registered Midwife.

Study Topics:

- Midwifery Knowledge and Skills
- Art and Science of Midwifery
- Midwifery Practice
- Lactation and Breastfeeding
- Interpersonal Skills
- Normal Process of Childbirth
- Human Biological Science
- Cultural Safety
- Childbirth Complexities
- Health Research
- The Well and Sick Baby

At Wintec we take a hands-on approach to learning. Using the latest hospital standard realistic models and props you'll carry out simulations of birthing procedures, take recordings, assess babies and learn how to manage obstetrics procedures. You'll also engage in scenario work to practise dealing with the different situations a midwife can encounter.

On this programme you have the opportunity to follow women through their pregnancy, labour, birth and postnatal care. In your first year you spend 16 weeks in clinical placements at birth centres, hospitals and various community agencies working under the supervision of a registered midwife. In your second year, your time in clinical placements is 30 weeks. In your third year you will spend just four weeks in class and the rest of the year on the job training working alongside registered midwives.

You will also need to provide two references, a Curriculum Vitae, a completed Health Declaration form and a personal statement.

HS0114

Bachelor of Social Work (Level 7)

Duration: Starts February for 4 years
IELTS: 6.5 in all bands; or equivalent

If you wish to pursue a career where you will work with individuals, groups and communities; to assist people, provide advice, advocacy and support to empower and help them realise their full potential and be able to function independently, then the Bachelor of Social Work is designed for you.

This four-year programme will give you the knowledge base, skills and attributes required for practice in a variety of social work fields such as schools, hospitals, community groups or government organisations.

The Bachelor of Social Work programme will prepare graduates to enter the social work workforce at a beginning practitioner level with provisional registration with the Social Workers Registration Board.

You'll develop the skills to:

- Promote the principles of human rights and social justice and promote social change
- Work collaboratively with other professionals in multi-disciplinary teams, organisations and communities
- Work with individuals or families and communities that are from diverse ethnic, cultural and indigenous backgrounds
- Undertake practice according to ethical, legislative and professional boundaries
- Work confidently in a bi-cultural context integrating the Treaty of Waitangi
- Work autonomously and make independent judgements from a well-informed social work position, based on theories of human behaviour and social systems
- Critically reflect on your practice through supervision, peer review and self-evaluation

HS1602

Paetahi Tumu Kōrero Bachelor of Counselling (Level 7)

Duration: Starts February for 3 years
IELTS: 6.5 in all bands; or equivalent

This programme has been designed to meet the professional membership requirements of the New Zealand Association of Counsellors, Te Whāriki Tautoko, and the New Zealand Christian Counsellors Association (NZCCA).

You will graduate competent to practice in the bicultural context of New Zealand.

Graduates have the opportunity to practice in three focus areas - Mental Health and Addictions Counselling, Family and Whānau Counselling and Māori-centred counselling.

Study Topics

- Demonstrate accurate empathy, genuineness and respect to others
- Have enhanced understanding and knowledge of the social, political, and cultural context of counselling
- Understand different cultural values
- Articulate a sound theoretical base to counselling
- Integrate your knowledge, skills, and practice in relation to counselling within an agency, school or primary health care setting
- Understand your own values and beliefs in relation to counselling
- Demonstrate an acceptable level of competence within a community agency, school or primary health care setting
- Understand professional codes of ethics

HS1102

Postgraduate Diploma in Health and Social Practice (Level 8)

Duration: Starts February or July for 1 year
IELTS: 7.0 or better in all bands; or equivalent

This programme is designed for professionals in the fields of Health and Social Practice which include: Occupational Therapy, Social Work, Counselling, Human Services, Nursing, and Midwifery.. The programme offers learning opportunities designed to inform your practice and develop valued knowledge in Treaty based practice. You will learn and grow professionally while undertaking interactive and experiential-based education alongside senior practitioners in health and social practice.

The aim of this programme is to provide you with greater capacity to work in management, leadership or senior practitioner roles either in your current field or within specialised fields of practice which include: working with children and youth, the elderly, people with disabilities, refugees and migrants and in the area of mental health. You can become skilled in a new field, or further advance your current specialisation.

This programme will extend the existing qualifications pathways and will allow higher level professional development that is interdisciplinary. It is relevant to practitioners from a wide range of practice contexts and the resulting inter-disciplinary interaction of health and social services practitioners will enhance and strengthen service delivery in the region. This programme is available to international students who may be overseas qualified health or social services practitioners but may not be New Zealand registered. This programme will not lead to New Zealand Health or Social Service Professional Registration.

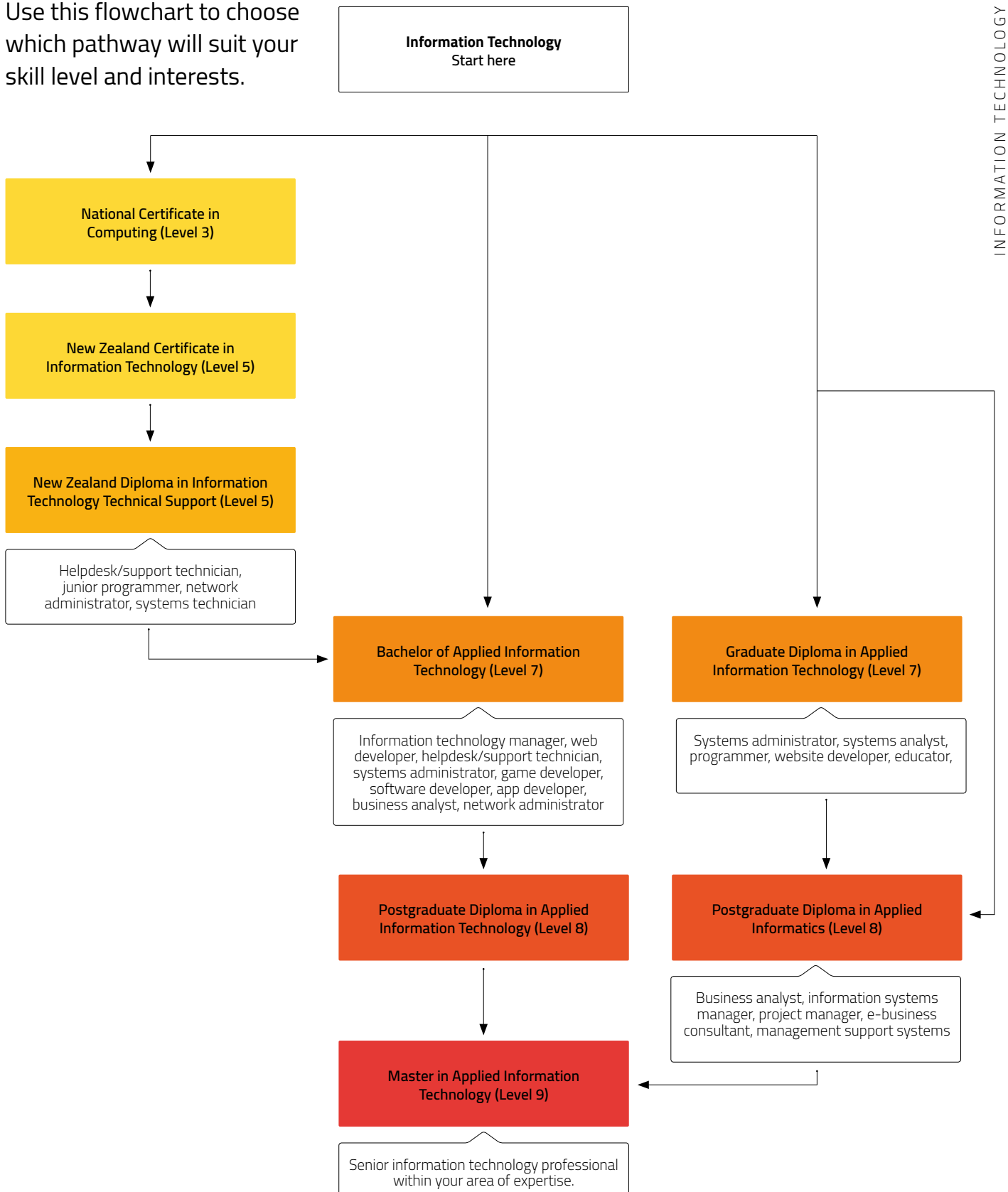
An interdisciplinary context will enable graduates to extend their capacity for critical and professional/clinical reasoning for specialist practice, leadership, management and supervision in complex professional environments.

Information Technology



Pathways

Use this flowchart to choose which pathway will suit your skill level and interests.



National Certificate in Computing (Level 3)

Duration: Starts February or July for 6 months

IELTS: 5.5, with no individual band score of lower than 5.0, or equivalent

This foundation programme will provide you with the basic knowledge and skills for entry into higher level programmes leading to a computer-related career.

You will study:

- Computer Hardware
- Data Management
- Networks
- Multimedia Development
- Computer Programming
- Software Applications

New Zealand Certificate in Information Technology (Level 5)

Duration: Starts February or July for 6 months

IELTS: 6.0, with no individual band score of lower than 5.5, or equivalent

This programme will provide you with a broad understanding of the core concepts and skills.

You will learn to apply the fundamentals of IT technical support, information systems, integration design, and software development as well as the core skills required of an IT practitioner.

This programme is the first semester of the Diploma and Degree if you decide to progress to further study.

You will study:

- Information Technology Operations
- Fundamentals of Programming and Problem Solving
- Professional Practice
- Business Systems Analysis and Design

New Zealand Diploma in Information Technology Technical Support (Level 5)

Duration: Starts February or July for 1 year

IELTS: 6.0, with no individual band score of lower than 5.5, or equivalent

This programme will provide you with the knowledge and skills for a career in Information Technology.

You will acquire broad vocational knowledge and practical skills, with an understanding of the core concepts in IT.

You will develop an awareness of the IT environment and an appreciation of the needs of users.

You will develop the skills to work in roles such as computer technician, help desk and technical support officer, entry level network administrator, network engineer, and applications support analyst with a particular focus on technical support.

This programme incorporates the New Zealand Certificate in Information Technology. It is also equivalent to the first year of the Bachelor of Applied IT so if you choose to progress to the degree you will only need to undertake another two years of study.

You will study:

- Introduction to Networks
- Operating Systems and System Support
- Database Principals
- Technical Support
- Information Technology Operations
- Fundamentals of Programming and Problem Solving
- Professional Practice
- Business Systems Analysis and Design





"I chose Wintec for my degree because it offered a more practical, hands-on approach rather than just theoretical academic knowledge."

Justin - Talking Tech

BI1601

Bachelor of Applied Information Technology (Level 7)

Duration: Starts February or July for 3 years
IELTS: 6.0, with no individual band score of lower than 5.5, or equivalent

This unique, practical programme prepares you for the dynamic and changing IT environment.

You will undertake modules that cover the 'traditional' core of IT (e.g. software engineering, database architecture and network engineering) and the fast-emerging fields that employers want graduates to understand, including cloud computing, analytics and security.

Employers have said they want graduates with skills in business (specifically marketing, accounting, management, communications, project management, systems analysis and design, support and higher level mathematics) and these topics are also built into the degree.

Specialisations

In your first year and a half you will choose from the following four specialisations, providing you with the skills to develop your career in the area you are most interested in:

- Network Engineering for a career in network engineering, network administration, cyber and network security.
- Software Engineering for a career in software engineering, software development, analytics, business intelligence and software testing.
- Database Architecture for a career in database/data warehouse development, database administration, business intelligence, and mobile applications development.
- Multimedia and Web Development for a career in multimedia and web design/development, web applications development and cyber security.

You will study:

All students will study the following modules in their first and second years:

- Object orientated programming
- Database modelling and SQL
- Mathematics for Information Technology
- Web development
- The web environment

- Business essentials for IT professionals
- Project management

As well as modules specific to your chosen specialisation:

Network Engineering

- Systems administration
- Routing and switching essentials
- Advanced networking
- Scaling networks
- Network engineering project
- Network security
- Connecting networks
- Cyber security

Software Engineering

- Data structures and algorithms
- Mathematics for programming
- Big data and analytics
- Principals of software testing
- Network engineering project
- Software engineering project
- Mobile applications development
- Data-warehousing and business intelligence

Database Architecture

- Web programming
- Database systems
- Database front-end applications
- Cloud server databases
- Web applications development
- Database architecture project
- Mobile applications development
- Data warehousing and business intelligence

Multimedia and Web Development

- Web programming
- Visual effects and animation
- Data visualisation
- Game development
- Web development project
- Cyber security
- Mobile applications development
- Human computer interaction

Graduate Diploma in Applied Information Technology (Level 7) IT0101

Duration: Starts February, April, July or Nov for 1 year

IELTS: 6.0, with no individual band score of lower than 5.5, or equivalent

With the ever-increasing technological emphasis of today's business world, this Information Technology qualification is a healthy addition to any degree. You can extend your skills and career opportunities in one year of full-time study or two years of part-time study.

If you have already completed a degree in any field, and you wish to gain an IT qualification, then this Graduate Diploma in Information Technology (Level 7) will advance your qualification and experience to create opportunities in a wide range of computing and information technology occupations.

It provides you with the relevant skills and knowledge to improve career prospects in a diversity of occupations involving information technology.

You will experience small class sizes and one-on-one contact with the experienced tutors. You will also have access to a range of specialist facilities including networking, electronics and computing laboratories.

You will study:

Three compulsory and seven elective modules, all at Level 6 or above. The compulsory modules cover systems analysis, programming and databases. For the elective modules you will choose two at Level 6 and five at Level 7. Note: Most Level 7 modules have pre-requisites and these should be discussed with the Programme Manager before enrolling. The compulsory modules require no previous IT knowledge.

Postgraduate Diploma in Applied Informatics (Level 8)

Duration: Starts February/ July for 1 year
IELTS: 6.5, with no band lower than 6.0; or equivalent

This programme is about using information technology to design solutions in a business environment. You will take into account the social, cultural and organisational setting in which the information will be used. Areas of specialisation could include e-commerce, strategic planning, organisational behaviour and services management. You will learn how to analyse and implement information systems that can deliver information to the right people in the most effective time and way and you will learn how to think critically and solve problems creatively.

You will study:

- Management of Information Systems
- Management Support Systems
- e-Business Models and Systems
- e-Business Strategies
- Strategic Planning
- Organisational Behaviour and Change
- Information Systems Essentials
- Information Technology Essentials
- Business Essentials

This programme has been developed in consultation with industry so you will get the skills and knowledge that are relevant for future employment opportunities in New Zealand.

We live in an age where the volume and complexity of information available threatens to overwhelm us. There is a demand in New Zealand for management of the necessary systems and people to make such information commercially useful. And because this programme has been developed to meet this increasing demand from industry in New Zealand, it doesn't take an IT whizz to calculate the benefits.

Throughout the year you'll learn from some of the best in the industry, including guest lecturers who specialise in informatics. Wintec is an early-adopter partner with Microsoft, so you will always work on the latest programs.



BI1702

Postgraduate Certificate in Applied Information Technology (Level 8)

Duration: Starts February for 1 semester
IELTS: 6.5, with no band lower than 6.0; or equivalent

The Postgraduate Certificate in Applied Information Technology has been developed in close consultation with industry to enable students to build on their technical skill set. It enables students to undertake a short programme of study in order to upgrade their qualifications and to amplify and update their information technology knowledge and skills.

You will study:

Students will Study four modules for a total of 60 credits as follows:

- Project Management for IT (level 8, 15 credits)
- And
- An approved selection of 3 modules worth 45 credits from level 8 electives:
 - Business analysis for information technology
 - Business Intelligence
 - Management of information systems
 - Networks and infrastructure
 - Security and forensics (delivery from 2018)
 - Software development and testing
 - Special topic in information technology
 - Applied Project (30 credits)

Progression

Graduates from this programme may subsequently enrol in the Postgraduate Diploma in Applied Information Technology or the Master of Applied Information Technology (Thesis pathway) with 60 cross-credits.

BI1703

Postgraduate Diploma in Applied Information Technology (Level 8)

Duration: Starts February for 1 year
IELTS: 6.5, with no band lower than 6.0; or equivalent

The Postgraduate Diploma in Applied Information Technology enables students to undertake an advanced programme of study, covering a wide range of subject areas, in order to augment their IT knowledge and skills and to obtain employment or advance their careers.

You will study:

The programme requires 120 credits consisting of two compulsory level 8 modules:

- Project Management for Information Technology; and
 - Research in Information Technology
- And an approved selection of modules worth 90 credits from the following list of Level 8 electives.

This selection will normally include at least one of module Applied Information Technology Project or module Information Technology Internship:

- Business Analysis for Information Technology
- Business Intelligence
- Management of Information Systems
- Networks and Infrastructure
- Security and Forensics (delivery from 2018)
- Software Development and Testing
- Special Topic in Information Technology
- Applied Information Technology Project
- Information Technology Internship
- An approved Level 8 module from another postgraduate programme; At most 45 credits from approved Level 7 Information Technology modules.

Progression

Graduates from the Postgraduate Diploma in Applied Information Technology may subsequently enrol in the Master of Applied Information Technology with 75 to 120 cross-credits.

BI1704

Master in Applied Information Technology (Level 9)

Duration: Starts February for 18 months
IELTS: 6.5, with no band lower than 6.0; or equivalent

The Master of Applied Information Technology enables students to undertake an extended programme of study, combining coursework with research, in order to prepare for further study or obtain a more senior position in their field of Information Technology.

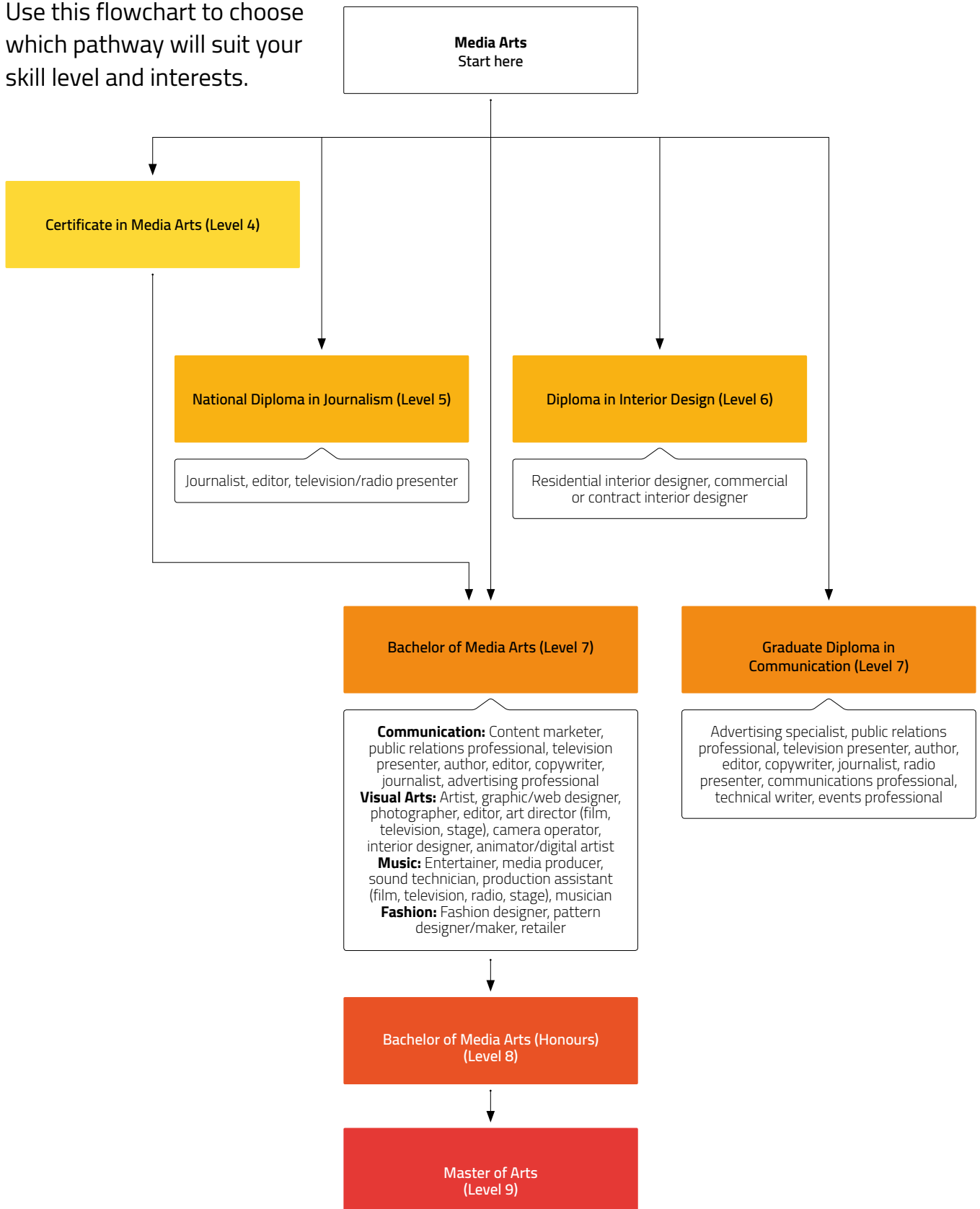
The Master of Applied Information Technology requires 180 credits, and has two pathways: one involving a 45 credit research project and the other involving a 90 credit thesis. Students who want to take more level 8 electives will take the first pathway, whereas those wanting to undertake more substantial research will take the second pathway.

Media Arts



Pathways

Use this flowchart to choose which pathway will suit your skill level and interests.



Certificate in Media Arts (Level 4)

Duration: Starts February or July for 1 year
IELTS: 6.0, with no band score less than 5.5; or equivalent

This programme is ideal if you wish to develop generic study skills as well as specialist skills in Media Arts. You will learn the basic knowledge and skills you'll need to start your career or progress into further study.

You'll study 8 modules (or equivalent), which will include 4 core modules of Study Skills, Written Communication, Interpersonal Communication and Media Portfolio. You will also complete 4 modules from your chosen pathway of Commercial Music, Communication or Visual Arts.

Commercial Music elective modules are Song Writing, Music Technology, Music Studies and Performance.

Communication elective modules are Journalism, Moving Image, Public Relations, Radio Studies.

If Visual Arts is your chosen pathway, you will choose four of the following six elective modules: Moving Image, Painting/Sculpture, Photography, Graphic Design, Fashion Design Studies, Spatial Studies.

If you meet the selection criteria for more than 1 endorsement, it is possible to study electives from different endorsements.

National Diploma in Journalism (Level 5)

Duration: Starts February for 1 year
IELTS: 6.0, with no individual band score of lower than 5.5, or equivalent

If you're investigative, intelligent and informed, and you like writing, then this programme is right for you. You'll be equipped with the skills for a multi-media career in journalism or communications.

You'll work on news gathering and writing for print, broadcast and internet; news photography and videography; court, council, and police reporting; media law and ethics; bi-cultural and multi-cultural perspectives, and shorthand.

On some projects, such as working on our online newspaper 'The Waikato Independent' you'll work collaboratively, sharing skills and ideas with students across the spectrum of media arts.

You will gain hands-on work experience in the media industry, and learn skills such as feature writing, web content creation and multi-media projects.

Diploma in Interior Design (Level 6)

Duration: Starts February for 2 years
IELTS: 6.0, with no individual band score of lower than 5.5, or equivalent

The art of the Interior Designer is the ability to creatively combine inspired thinking and technical components to transform interior spaces to enhance lifestyles.

This is a practical course aimed at developing students' abilities in interior design from conceptual stages through to fully resolved interior proposals. You'll learn current industry skills from practicing interior designers and have access to the latest industry technology. You'll use manual and technical drawing as well as digital programmes to produce professional design outputs.

A strong industry network is behind this programme, supporting students with work experience opportunities. Guest speakers regularly provide inspiration and insight into current industry practice, as do on-site industry visits.

The work you do will be for real clients with most projects involving industry or community groups. Work experience is undertaken in your final year and can lead to full-time employment.





"I'm living my dream. I have always wanted to be a Fashion Designer and at Wintec I was able to choose study topics that really interested me."

Katherine - Bachelor of Media Arts
(Fashion Design) student



"I chose to study at Wintec because of the impressive arts facilities and the welcoming people. I knew I would get the technical skills I need to succeed in the film industry. If you're looking to try something creative, Wintec is the perfect place to start."

Sai Saroj - Bachelor of Media Arts
(Moving Image) student

BM9601

Bachelor of Media Arts

Duration: Starts February or July for 3 years
IELTS: 6.0 across all bands; or equivalent

Within the School of Media Arts you can choose to explore pathways in Visual Arts, Fashion, Communications or Commercial Music. Once you've chosen a pathway you'll learn core skills within your major, as well as having opportunities to study other Media Arts papers through electives.

Visual Arts

If you want to develop skills and knowledge to prepare you for a career in visual arts and design, then this programme is right for you. You can choose to specialise in one of the following endorsements, and with our flexible structure you'll also be able to tailor your degree with modules from other areas.

- Graphic and Digital Design
- Moving Image
- Painting and Sculpture
- Photography

Communication

Are you interested in a career in journalism, advertising, public relations, film or moving image? The Bachelor of Media Arts (Communication) is a unique, practical and project driven degree for you if you are interested in working primarily with language in the media.

The Communication endorsement of the Bachelor of Media Arts allows you to specialise in one of the following areas: Journalism, Public Relations or Moving Image.

Commercial Music

The Commercial Music endorsement of the Bachelor of Media Arts is for you if you wish to focus on performance, composition/song-writing or production of music. A feature of this programme is the industry-based projects which give students commercial practical experience.

Music students have 24-hour access to six recording studios, including a fully equipped Pro Tools HD system with, a Control 24 mixing console, and 25 digital audio workstations.

As part of your study you will have the opportunity to undertake collaborative projects with arts and media students in disciplines such as moving image, graphic design, photography, painting/sculpture, journalism and public relations/advertising. Your projects will involve sound for film, installations, television and radio advertising.

Fashion

The Fashion endorsement of the Bachelor of Media Arts will prepare you for a career in the fashion industry with a focus on design and the business of fashion.

Classes provide a learning environment that allows you to develop your individual ideas and gain strong technical skills in construction and pattern making.

You will learn in studio rooms and workshops that replicate industry standards, in the heart of the CBD.

You will study specific software packages to ensure that you are skilled in the most current technologies needed for today's global businesses.

Portfolio

You will need to include a portfolio as part of your application to show your passion for the area of Media Arts you have chosen and also demonstrate your skills and abilities.

Graduate Diploma in Communication (Public Relations/Advertising, Professional Writing) (Level 7)

Duration: Starts February or July for 1 year
IELTS: 6.0 across all bands; or equivalent

To be successful in professional writing or public relations/advertising you must be an excellent communicator, a competent writer, a problem solver, lateral thinker, interested in contemporary issues, creative and able to work under pressure. This programme will help develop your abilities in these areas and prepare you for career opportunities in public relations, advertising and corporate communications. You can choose to study either of the following endorsements:

- Public relations/advertising
- Professional writing

The emphasis here is on practical learning. Supported by tutors with relevant industry experience you'll undertake research and work on real projects with real clients. Project work may include writing media releases, developing strategic briefs and company branding. You will gain experience and the opportunity to apply your new skills and knowledge during a three-week industry internship and through regular collaboration with local enterprises.

Bachelor of Media Arts (Honours) (Level 8)

Duration: Starts March for 1 year
IELTS: 6.5, with no band lower than 6.0; or equivalent

This postgraduate programme is for graduates who wish to undertake an in-depth investigation into their chosen field (visual arts, design, communication or music) within a research-focused learning context. It offers a contemporary, open and rigorous learning environment tailored to your needs. Collaborative and multi-disciplinary practice is encouraged as you respond to and anticipate new developments in the visual arts. The BMA Honours can be integrated in the Master of Arts for two years of postgraduate study. You will need to complete and provide a portfolio with your application.

You'll Study

- Research Practice (900 hours) – this includes a major studio-based research project and a parallel written research paper.
- Contemporary Theory (300 hours) – this includes a tutorial-based survey of some recent theories of relevance to the arts and media.

Master of Arts (Level 9)

Duration: Starts March, July and October for 1 year
IELTS: 6.5, with no band lower than 6.0; or equivalent

If you have completed the Bachelor of Media Arts (Honours) programme or have equivalent relevant work experience, this one-year postgraduate programme will prepare you for high level investigation and intervention within your chosen academic or professional field. The programme allows you to extend your domain of practice through in-depth investigation in your particular area of visual arts, design, communication or music practice within a research-focused learning environment.

I had the opportunity to learn about the creative communication style in New Zealand and work with local organisations. I was able to get immersed with the Kiwi education and culture by working closely with my classmates, tutors and peers studying the same course.

Marianne Therese Cruz - Graduate Diploma in Communication student

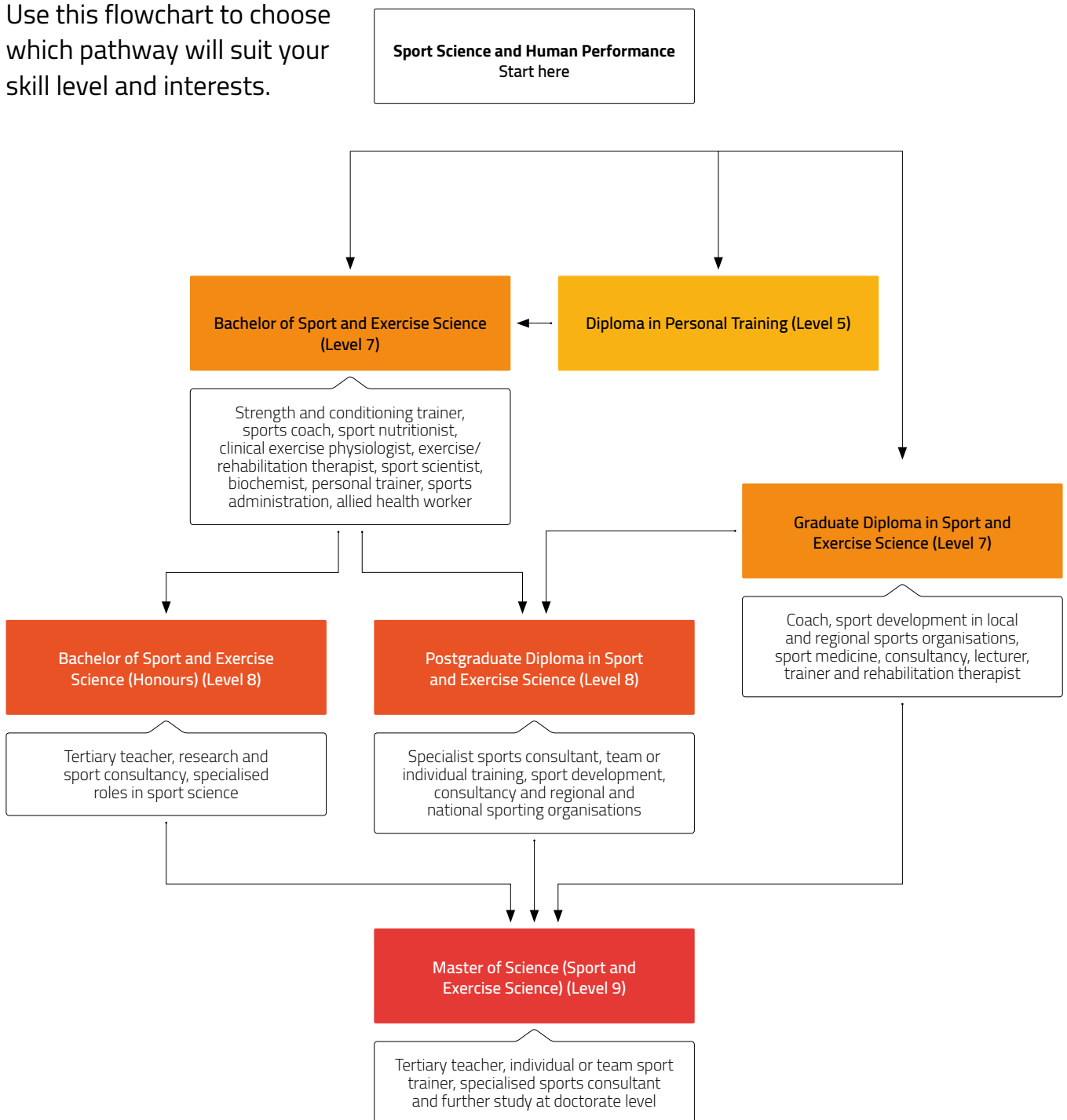


Sport Science



Pathways

Use this flowchart to choose which pathway will suit your skill level and interests.





SC9501

Bachelor of Sport and Exercise Science (Level 7)

Duration: Starts February or July for 3 years
IELTS: 6.0, with no band lower than 5.5; or equivalent

If you're passionate about understanding how the human body works and how to get the most out of it to achieve the best results in elite performance or health and well-being, then this is the programme for you.

You'll learn alongside industry professionals and have access to the same state-of-the-art sport testing and consulting facilities used by national and international athletes.

You'll learn the skills and knowledge to become a well-rounded practitioner of sport and exercise science; this includes physical education, coaching, exercise physiology, sport nutrition, sport psychology, biomechanics, sport rehabilitation and personal training.

You will study:

- Musculo-Skeletal Anatomy
- Physical Literacy
- Human Body Systems
- Exercise Programming and Design
- Human Movement Studies
- Sport and Exercise Psychology
- Lifestyle, Nutrition and Health

In your third year you will complete 70 hours practical experience in your areas of interest. These hours may be accrued by placements at local gyms or working with clients for injury rehabilitation, nutrition, physical conditioning, and performance assessment and improvement.

You will also have the opportunity to undertake research projects with clients and work alongside industry professionals.

SP0801

Graduate Diploma in Sport and Exercise Science (Level 7)

Duration: February for 1 year
IELTS: 6.0, with no band lower than 5.5; or equivalent

If you want to take your study in Sport and Exercise Science further or complement your first degree with specific Sport and Exercise Science knowledge and skills, this is the programme for you. It allows you to tailor your programme to suit specific interests and goals with options in:

- Exercise Physiology
- Sport Rehabilitation
- Clinical Exercise Physiology
- Community Sports Development
- Sport Coaching

A supportive, creative and dynamic research culture will ensure you grow both capability and capacity in key areas. You will learn from internationally qualified sport scientists and athletes who bring a broad knowledge of theory and practice to their teaching and research. You'll have full access to what are considered to be amongst the best sport science facilities in New Zealand including well-equipped laboratories and the same state-of-the-art sport testing and consulting used by national and international athletes. You can tailor your programme to suit your needs.

The compulsory module is Research Methods in Sport and Exercise Science and the elective modules can be seen at www.wintec.ac.nz/SP0801

SP0202

Bachelor of Sport and Exercise Science (Honours) (Level 8)

Duration: Starts February for 1 year
IELTS: 6.5, with no band lower than 6.0; or equivalent

This programme extends your undergraduate degree with specialist research skills and knowledge in Sport and Exercise Science. You are able to tailor your programme to suit your goal.

You can specialise in:

- Biomechanics
- Exercise Physiology
- Exercise Rehabilitation
- Sport Nutrition

Wintec's sports laboratories are accredited with Sport Science New Zealand and are considered to be amongst the best sport science facilities in New Zealand. You'll have leading practitioners as tutors and will be working with specialists and current athletes to complete your research. You'll also have access to fully equipped laboratories and the same state-of-the-art sport testing and consulting used by national and international athletes.

SP0201

Postgraduate Diploma in Sport and Exercise Science (Level 8)

Duration: Starts February for 1 year
IELTS: 6.5, with no band lower than 6.0; or equivalent

Build on your undergraduate degree or equivalent industry experience by concentrating on your specific area of interest.

You can specialise in:

- Biomechanics
- Exercise Physiology
- Exercise Rehabilitation and Clinical Exercise Physiology
- Sport Nutrition
- Sport and Exercise Psychology

At Wintec you not only receive face-to-face support from industry specialists who are both highly qualified and currently working with professional and elite athletes, you also have internationally qualified sport scientists and athletes bringing a broad knowledge of theory and practice to their teaching and research. Wintec's sports laboratories are accredited with Sport Science New Zealand and are considered to be amongst the best sport science facilities in New Zealand.

SP0203

Master of Science (Sport and Exercise Science) (Level 9)

Duration: Starts February for 2 years
IELTS: 6.5, with no band lower than 6.0; or equivalent

This programme can be customised to your specialist area of interest and is designed for those who want to continue onto a doctoral programme or into higher level positions in the workforce.

You can specialise in:

- Biomechanics
- Exercise Physiology
- Exercise Rehabilitation and Clinical Exercise Physiology
- Sport Nutrition
- Sport and Exercise Psychology
- Thesis or paper(s) and dissertation options are also available.

You will research in a supportive, creative and dynamic research culture, growing both capability and capacity in key areas. At Wintec we foster knowledge creation, knowledge transfer and innovation through research and research-based teaching while developing collaborations and strategic partnerships with both internal and external agencies. You will work with tutors who are highly regarded in the industry and specialists in their field.



Tourism



BI1604

New Zealand Certificate in Tourism (Level 4) (Tourism Operations 4)

Duration: Starts February or July for 1 semester

IELTS: 5.5, with no individual band score of lower than 5.0; or equivalent

This programme will provide you the skills to work for tourist attractions, regional tourist offices, hotels, conference centres or tour operators within New Zealand.

You will be placed in a local tourism operation to gain work experience, learn first-hand how the industry works and how staff interact with the visitors.

You will gain an understanding of the tourism industry and visit a North Island tourist destination to see how real tourism businesses work.

Successfully complete this programme and you'll also have the opportunity to sit the examination to gain the City and Guilds qualification Level 2 Diploma in International Tourism.

You will study:

- Why people travel
- Tourism history, development and attributes in New Zealand
- New Zealand tourist destinations, their geographical factors and aspects that make them successful
- Customer service in tourism organisations
- Products that enhance the visitor experience such as foreign exchange, travel insurance, car hire, cruising and accommodation
- Relevant legislation, regulations, standards and guidelines
- Tourism business systems and processes
- Human resource operations and processes for a tourism organisation

BI1605

New Zealand Diploma in Tourism and Travel (Level 5) (Tourism Management 5)

Duration: Starts February or July for 1 year
IELTS: 6.0, with no individual band score of lower than 5.5; or equivalent

In this programme you will learn the management skills that could help you gain front-line or management positions. You will develop your communication skills, learn tourism workplace practices, and gain an understanding of national and international tourism operating environments and tourism business systems.

You will be placed in a local tourism operation to gain work experience, learn first-hand how the industry works and how staff interact with the visitors.

As part of your programme you will visit tourist attractions to develop a greater understanding of what creates a great experience and how tourism businesses operate.

Successfully complete this programme and you'll also have the opportunity to sit the examination to gain the City and Guilds Level 3 Advanced Diploma in International Tourism (4867-03) qualification.

You will study:

- Factors affecting global tourism
- History of New Zealand and tourism
- Marketing for a tourism business
- Customer service in a tourism workplace
- How to analyse and interpret financial information
- Communication with stakeholders

Throughout the programme you will practice the standards required in a tourism workplace such as time/task management, self-management, responsibility, reliability and personal presentation.



Embedded within both of these programmes is internationally recognised City & Guilds programme content.

Important Information

Code of Practice

When students come to study at Wintec, we have an important responsibility to ensure that those students are well informed, safe and properly cared for. Wintec is a signatory to the Code of Practice for the Pastoral Care of International Students, published by the New Zealand Ministry of Education. You can read more about the Code at the New Zealand Qualification Authority website at www.nzqa.govt.nz/providers-partners/education-code-of-practice/

Accident Insurance

The Accident Compensation Corporation provides accident insurance for all New Zealand citizens, residents, and temporary visitors to New Zealand, but you may still be liable for all other medical and related costs. Further information can be viewed on the ACC website at www.acc.co.nz

Additional Costs

It is important that you pay for the full costs of all services requested along with your tuition fees payment. A receipt will only be issued once full payment has been received by Wintec. At the time of printing your total living expenses required per year for Visa purposes is \$15,000 NZD. Some programmes have additional expenses such as books, stationary, uniforms, catering equipment and assignment materials. Prices vary so please enquire on application to a programme. Text books are usually between \$75 - \$110 each and some courses have additional independent activity fees.

Attendance

You must attend 100% of your classes. If you miss a class, obtain a medical certificate or other evidence to explain your absence and give to your tutor as soon as you return to class. Missing class will affect your visa renewal.

Complaints Process

You can make an internal complaint here:
www.wintec.ac.nz/seic/files/formal-complaint-form.pdf

If a student complaint is not resolved by Wintec's internal process you can contact New Zealand Qualifications Authority (NZQA) who will manage the student complaint. View more information here:
www.nzqa.govt.nz/assets/Providers-and-partners/Code-of-Practice/int-students-make-a-complaint.pdf

Disclaimer

Every effort has been made to ensure the content of this brochure is correct. The information is subject to a continuous process of review. Wintec (Waikato Institute of Technology) therefore reserves the right to make changes to programme offerings and any other content. Wintec will not accept liability for any errors or omissions contained in this brochure nor for any subsequent actions that may arise as a consequence of decisions made based upon its contents. Programmes will only be offered subject to sufficient numbers. Check the website for the most current information.

EER reviews of tertiary education organisations

NZQA assesses the standard of education for tertiary education organisations through a regular system of external evaluation and review (EER). Through periodic EER, tertiary education organisations are held

accountable to their students, employers, funders, quality assurance bodies and other interested parties. Read Wintec's EER report for 2015 here: www.nzqa.govt.nz/nqfdocs/provider-reports/6019.pdf

Eligibility for Health Services

Most international students are not entitled to publicly funded health services while in New Zealand. If you receive medical treatment during your visit, you may be liable for the full costs of that treatment. Full details on entitlements to publicly funded health services are available through the Ministry of Health, and can be viewed on their website at www.moh.govt.nz.

IELTS

All referrals to IELTS refer to the Academic Requirements only. In all cases, IELTS assessments must be no less than 2 years old at the time of application.

Immigration

Full details of immigration requirements, advice on rights to employment in New Zealand while studying, and reporting requirements are available from Immigration New Zealand, and can be viewed on their website at www.immigration.govt.nz.

Medical and Travel Insurance

International students (including group students) must have appropriate and current medical and travel insurance while in New Zealand.

Parent Information

As a parent or family member of a Wintec student, we automatically recognise you as a part of Wintec's extended family. You have worked hard to help develop your child for this next phase of life – tertiary education. We've prepared some information especially for you on our website www.wintec.ac.nz/international/studentsupport/under-18s-parent-information

Refund Policy

By accepting a place in a programme or paying fees at Wintec, a student enters a contract with Wintec for the period of the programme. This means there is an obligation to pay the fee for one year or the length of the programme if less than one year. The refund policy is available on the website: www.wintec.ac.nz/international under 'Information for Students'. In the event of insufficient numbers of enrolments the programme may be cancelled and a refund will be given.

Useful Links

- Study in New Zealand:
www.studyinnewzealand.govt.nz
- NZQA's Studying in New Zealand:
www.nzqa.govt.nz/studying-in-new-zealand
- Immigration New Zealand's studying in New Zealand:
www.immigration.govt.nz/migrant/stream/study
- New Zealand Now:
www.newzealandandnow.govt.nz
- Tourism New Zealand:
www.tourismnewzealand.com

What Does That Mean?

When you come to a tertiary institute you will hear a lot of new terms; here is an explanation of some of them.

Alumni

All Wintec graduates are considered to be Wintec alumni.

Bachelor Degree

A tertiary qualification awarded for study undertaken at a tertiary institute, typically requiring three to four years of full-time study. A Level 7 qualification on the New Zealand Qualifications Framework (NZQF).

Campus

The location where a programme is taught.

Certificate level

Certificates generally take between six months to a year to complete if studying full-time. Certificates provide a broad introduction or can provide entry into a higher level of tertiary study. They cover a range of levels from 1–6 on the NZQF.

Co-Requisite

A module that, if not already passed, credited or exempted, must be taken concurrently with the module for which it is specified.

Code of Practice

The Code of Practice prescribes the required outcomes education providers and their agents need to deliver for their international students. The Code of Practice does not apply to concerns about academic standards.

Diploma

A post-secondary qualification usually requiring one or two years of study. Diplomas are often required for entry into advanced trade, technical and some professional occupations. They cover a range of levels from 5–7 on the NZQF.

Elective

Some Wintec programmes allow elective modules to be taken from outside the main focus of the programme or from other Wintec programmes.

Enrolment

The formal process, including the payment of fees and charges, by which an applicant is

formally registered for one or more modules and entitled to attend classes.

Entry

Acceptance to a specific programme of study at Wintec.

Entry Criteria

The minimum requirements an applicant must meet in order to gain entry into a programme, including processes for exceptions where applicants do not meet the general entry requirements.

Faculty

Wintec has one Faculty, comprising all Wintec's teaching Schools and Centres. The Dean is the Head of the Faculty.

Graduate level

Level 7 on the New Zealand Qualifications framework. Refers to some programmes that are open to students who have completed an undergraduate qualification.

International student

A student who is not a New Zealand or Australian citizen or permanent resident.

Level

Any of the 10 levels of the NZQF, which range from Level 1 to Level 10.

Masters

Level 9 on the New Zealand Qualifications framework. A Master's Degree qualifies individuals to apply an advanced body of knowledge in a range of contexts for research and is a pathway for further learning, professional practice and/or scholarship.

Module

A single component or unit of study that contributes to and forms part of an entire programme.

Moodle

Student portal for enrolment, timetables, forum discussions, assignments and results.

Qualification

A certificate, diploma or degree awarded following the successful completion of a programme of study.

Orientation (0-week)

A programme of activities to introduce new students to Wintec and assist the transition to tertiary study.

Placement

A work placement, internship, industry study, clinical placement, practical work, practicum, teaching practice or industry experience is work-related experience, usually at an organisation external to Wintec.

Pre-requisite

A module that must be passed or credited before a student may enrol in the module for which the pre-requisite is specified.

Programme

The module or modules to be taken towards a particular qualification.

Postgraduate programmes

Studies normally undertaken after the completion of an undergraduate degree, or in some cases, on the basis of relevant post-secondary qualifications and/or work experience.

Semester

Wintec's teaching year is divided into semesters; semester 1 and semester 2 and for some programmes, summer school.

Student Consultants

A person who advises students on course selection, the enrolment process and opportunities for postgraduate study.

Transfer of Credit

Transfer of credit (TOC) is the process of assessing and awarding credit towards a programme based on past formal and informal learning.

Undergraduate

Usually refers to first-time university programmes and bachelor degrees.

How to Enrol

At Wintec you'll learn from outstanding teachers, access state-of-the-art facilities, and make valuable contacts and lifelong friends. Follow the steps below to apply and open the door to your future.

Choose Your Programme

- Search in this guide for programme choices
- Visit wintec.ac.nz to check up-to-date information

TIP: Check out the information about the programmes you're interested in - the programme content, career opportunities and the entry criteria. If you're not sure if you meet the entry criteria contact us or your education agent.

1

Apply

If you have an education agent, they can prepare your application.

If you do not have an agent, you can apply online using our online enrolment portal wintec.ac.nz/enrol

For some programmes we may organise for a staff member to call you to discuss your application. You may need to provide us with additional documentation – you can scan and upload this online or send it in to us.

2

Accept

1. We'll assess your application and send you an offer by email.
2. We'll let you know how to accept your offer – this is usually online.
3. Accept your offer.

TIP: Your offer may be conditional on you passing exams or providing us with some other information – we'll keep in touch and let you know what we need from you. Check your emails to make sure you don't miss anything from us.

3

Prepare

- Visit the International Centre when you first arrive to New Zealand. Located in B Block, Hamilton City Campus
- Download your first day flyer from the email we will send you
- Access your timetable from wintec.ac.nz/timetables
- Attend the International Student Welcome Orientation, and your class induction
- Join in the activities happening on campus during your first few weeks of study

4

If you need any assistance with enrolling or exploring your study options, don't hesitate to contact us, we're here to help. Contact our Student Enrolment and Information Centre; our friendly student consultants are happy to help.

 **Online:** wintec.ac.nz  **Email:** international@wintec.ac.nz

Contact Us

City Campus

A Block, Gate 3, Tristram Street, Hamilton

Opening hours:

Monday–Thursday 7.30am–5.00pm

Friday 9.30am–5.00pm

Rotokauri Campus

Student Hub, 51 Akoranga Rd, Hamilton

Opening hours:

Monday–Thursday 8.00am–4.00pm

Friday 10.00am–4.00pm

Courier Address

Attn Student Enrolment

Wintec

Main Stores, Gate 4

Tristram Street

Hamilton 3240

New Zealand

✉ international@wintec.ac.nz

🌐 wintec.ac.nz

📘 facebook.com/wintec

📷 instagram.com/wintecnz

👤 [snapchat wintecnz](#)



Disclaimer

The information in this prospectus describes the courses we intend to offer and is correct at the time of printing (December 2016). Please note that programmes and courses are subject to change. The most accurate and up-to-date information is available at wintec.ac.nz